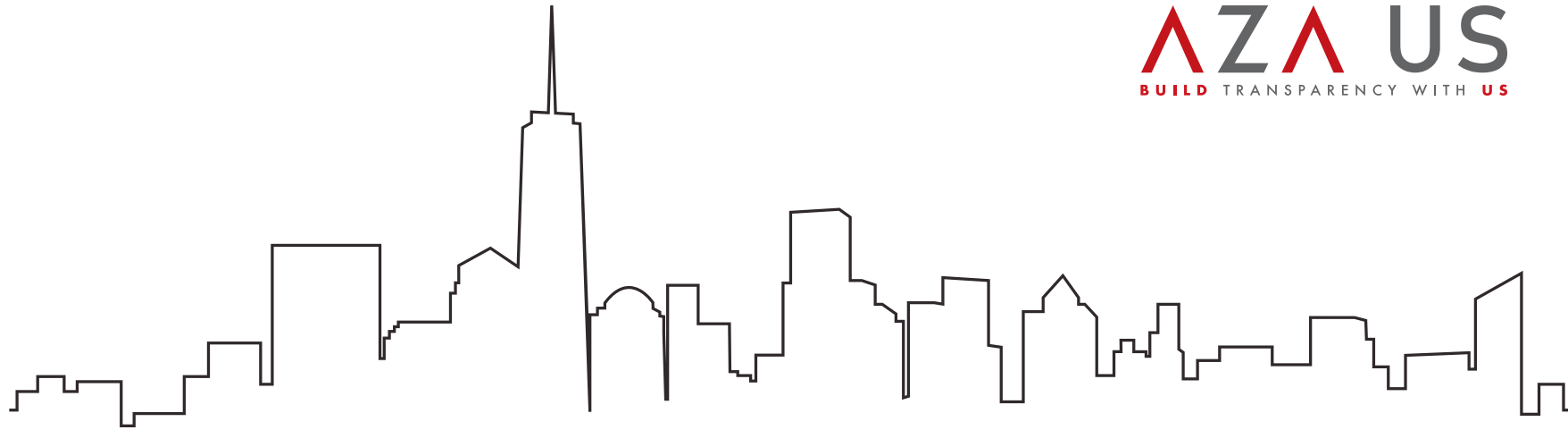




AZA US
BUILD TRANSPARENCY WITH US



AZA US
BUILD TRANSPARENCY WITH US

AZA US: italian production with an american heart. From pre - planning through to project completion AZA US is your partner of choice for the USA.

AZA US is expert in design, developement, engineering, fabrication assembly and erection of exterior envelopes and custom facade systems, providing complete design - build service to the construction marketplace.



HEADQUARTER

184E 7th Street
New York, NY 10009

T. +1 212 228 8972
F. +1 212 228 5702

info@aza.us.com
www.aza.us.com

Build transparency with us



DESIGN ENGINEERING AND FABRICATION

Fiorenzuola d'Arda - Piacenza Italy
Noventa Padovana - Padova Italy

Build transparency with us

PRODUCTS

Product Range:
DIVISION CURTAIN WALL

Aluminum Windows and Window Wall

Aluminum Curtain Wall

Unitized Systems:

- Double Skin Wall
- SSG Curtain Wall
- Window Wall

Rainscreen Systems and Metal Panel Systems

Climatic Walls and Intelligent Facades

Natural Stone Cladding

Glass and Aluminum Atrium/Mall Roofing

Product Range:
DIVISION SPECIAL STRUCTURES

Glass Fin Systems

Tension Structures

Glass Canopies

Roofs and Skylights

Glass Flooring/Staircase Systems;

Point Supported Systems

All glass structures

Brise Soleil and Shading Systems

Build transparency with us



FABRICATION PLANT 1 FLA
Fiorenzuola d'Arda - Piacenza

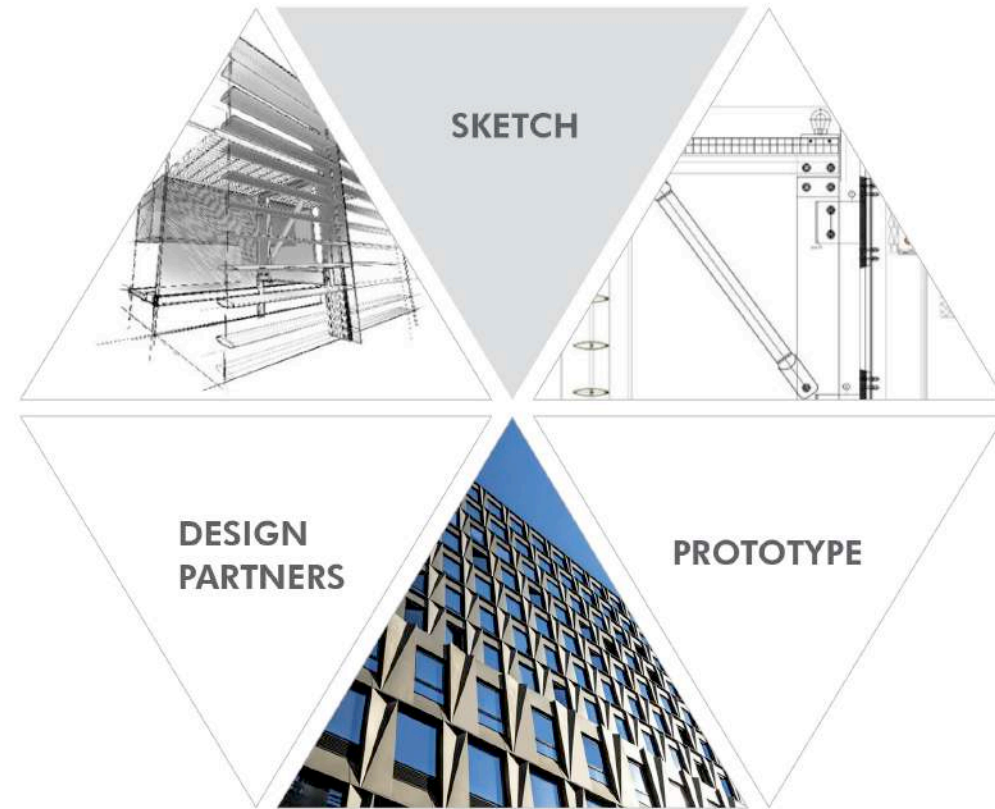


FABRICATION PLANT 2 NPD
Noventa Padovana - Padova

Build transparency with us

AZA US is involved in the process from start to finish. From planning and design, to after the handover, we are with our clients every step of the way.

We are preferred experts in the US market for building facades and envelopes in glass and metal. We are Italian in our hearts but American in our determination. We strive for perfection, precision and excellence.



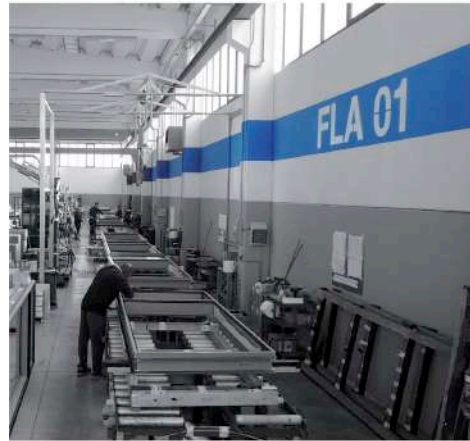
Build transparency with us

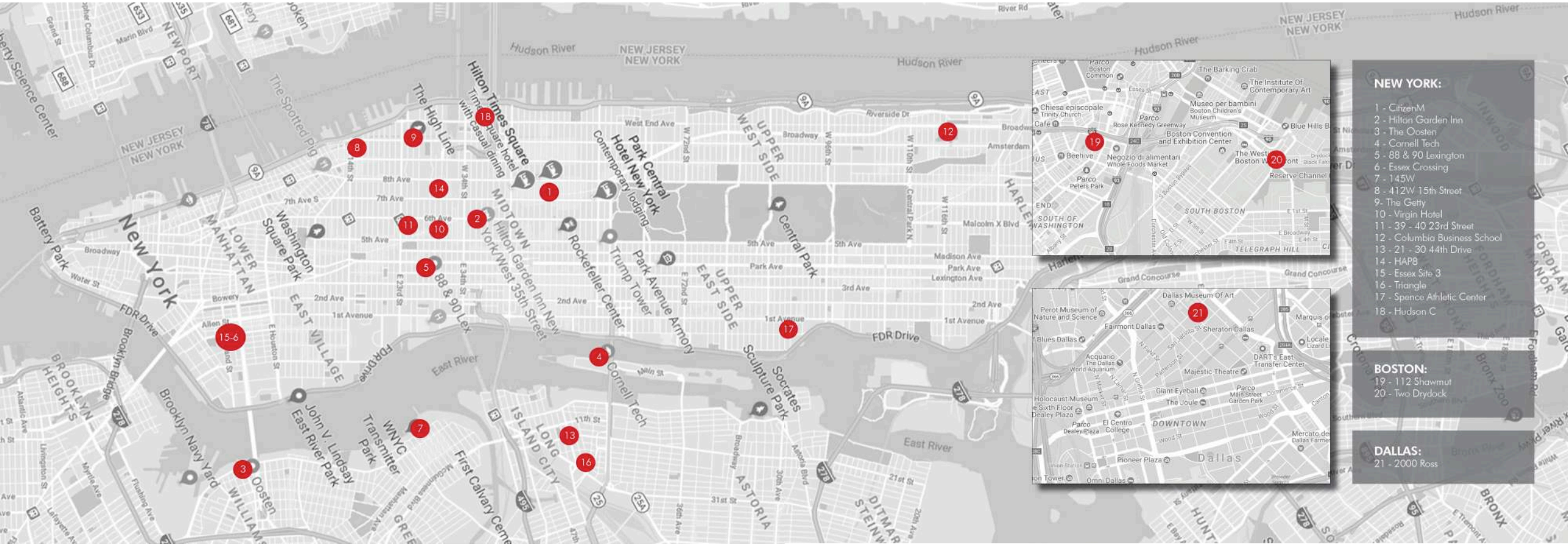
2 fabrication plants with over 430.000 sq. ft. and 260 employees of whom 57 involved in design and engineering.

We can ensure, thanks to our quality control department, an extensive manufacturing capability with top quality and highest standard, maintaining maximum flexibility to satisfy all your request and projects peculiarity.

Our specialized and methodological approach to each single project, allow us to give you the best technical solution, using innovative systems, tested to perform at best in every condition.

Build transparency with us





- NEW YORK:**
- 1 - CitizenM
 - 2 - Hilton Garden Inn
 - 3 - The Oosten
 - 4 - Cornell Tech
 - 5 - 88 & 90 Lexington
 - 6 - Essex Crossing
 - 7 - 145W
 - 8 - 412W 15th Street
 - 9 - The Getly
 - 10 - Virgin Hotel
 - 11 - 39 - 40 23rd Street
 - 12 - Columbia Business School
 - 13 - 21 - 30 44th Drive
 - 14 - HAP8
 - 15 - Essex Site 3
 - 16 - Triangle
 - 17 - Spence Athletic Center
 - 18 - Hudson C

- BOSTON:**
- 19 - 112 Shawmut
 - 20 - Two Drydock

- DALLAS:**
- 21 - 2000 Ross

PROJECTS IN PROGRESS



Columbia Business School

LOCATION:

3022 Broadway, New York

ARCHITECT/DESIGNER:

Diller Scofidio + Renfro
FXCollaborative

YEAR:

2018 - 2019

TYPE OF BUILDING:

Educational

DATA:

2 Building
10 Floors + 12 Floors

DEVELOPER:

Columbia University

CM/GENERAL CONTRACTOR:

Turner Construction

GLAZING CONTRACTOR:

W&W Glass

FACADE CONSULTANT:

Arup

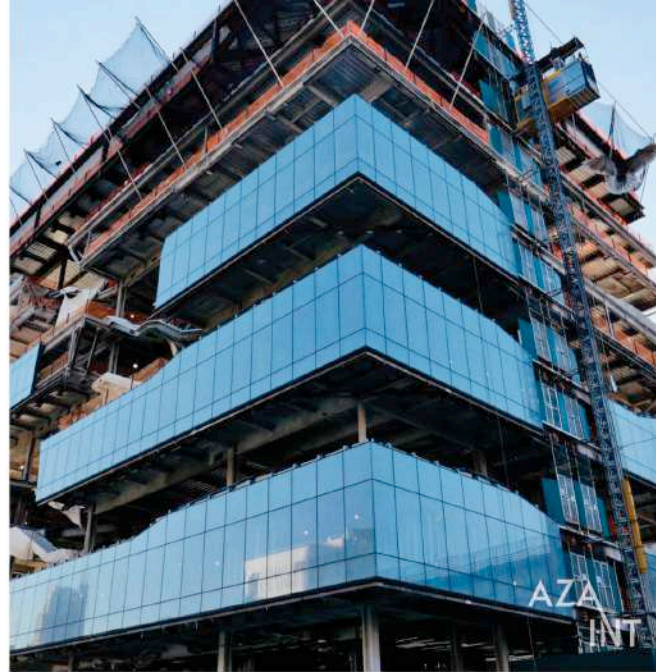
SCOPE OF WORK:

Design, Engineering, Fabrication of:
161,500 Sq Ft of full customized systems

CLIENT:

AZA-INT Corporation





CHALLENGES:

The School's new facilities on the Manhattanville Campus have 136,000 Sq Ft of fully custom unitized curtain walls and 25,000 Sq Ft of stick built system. At ground floor curtain walls with glass fins - spanning up to 36' (one piece) with a make up based on 3 plies of low iron laminated glass with SGP - is one of the most challenging part of the project.

GLASS MAKE UP:

Type WT-A with Glass Fins

Fins: Triple laminated 3/4" + 3/4" + 3/4" Low Iron with SGP

IGU: 5/16" + 5/16" laminated Low Iron (Ipasol 70/37 #4) - 5/8" air 5/16" + 5/16" laminated Low Iron

IGU acoustic: 1/2" + 3/8" laminated Low Iron (Ipasol 70/37 #4) - 1/2 air 1/4" + 5/16" laminated Low Iron (acoustic pvb).



PROJECT MAP:



Hudson C

LOCATION:

11th Av. and 38th Street, New York

ARCHITECT/DESIGNER:

Pelli Clarke Pelli Architects - Sloc
Architects LLP

YEAR:

2019

TYPE OF BUILDING:

Residential

DATA:

2 buldings
53 Floors + 33 Floors

DEVELOPER:

Rockrose Dev. LLC

CM/GENERAL CONTRACTOR:

Rockrose LLC

GLAZING CONTRACTOR:

Walsh Glass & Metal

FACADE CONSULTANT:

CANY

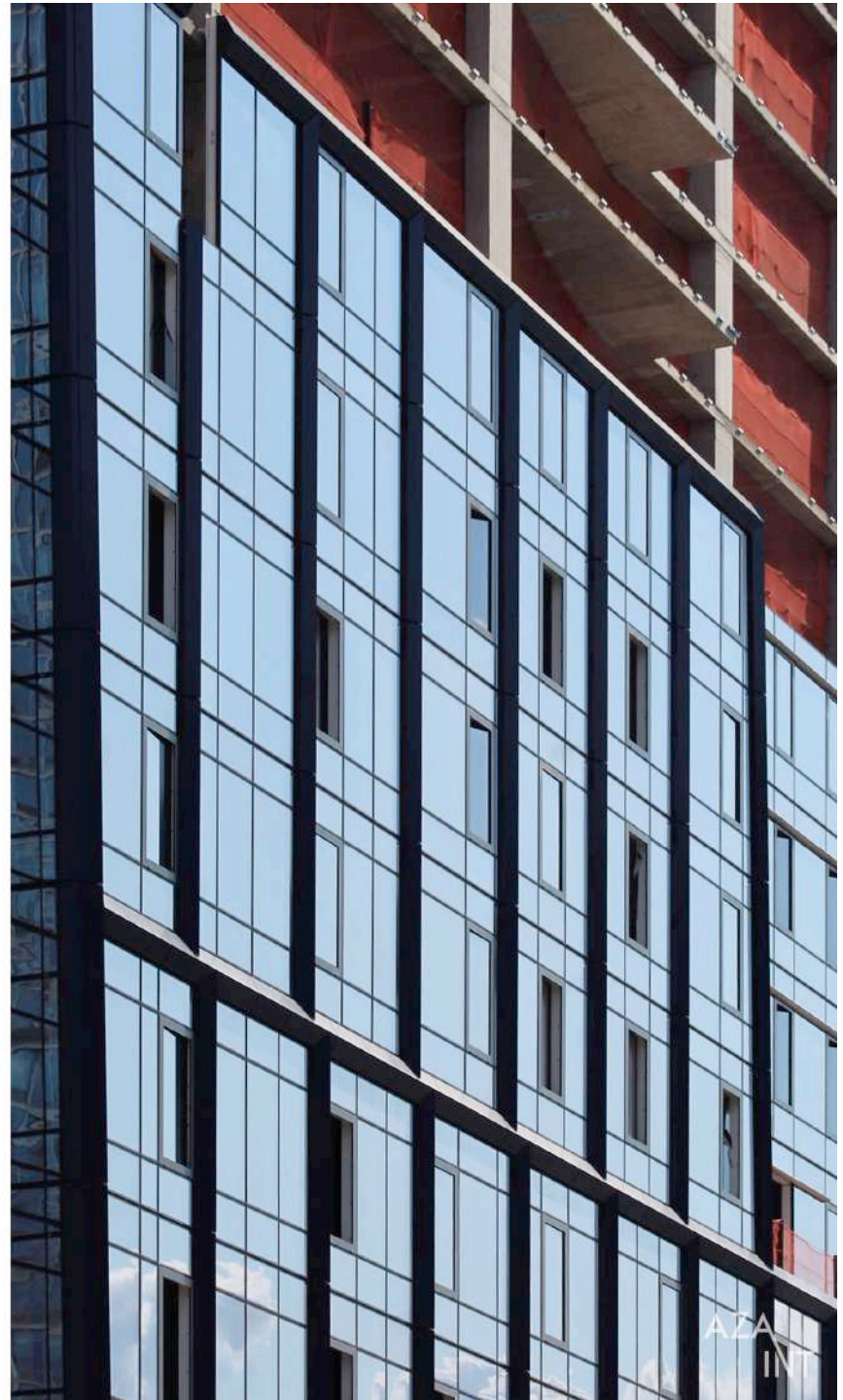
SCOPE OF WORK:

Design, Engineering and Fabrication
of: 220,660 Sq Ft of AZA US Unitized
Curtain Wall with vertical/horizontal
fins, 1400 vents

CLIENT:

AZA-INT Corporation





AZA
INT

Virgin Hotel

LOCATION:

1227 Broadway, New York

ARCHITECT/DESIGNER:

Voa Associated / Stantec

YEAR:

2018 - 2019

TYPE OF BUILDING:

Hotel

DATA:

41 Floors

DEVELOPER:

LAM GROUP

CM/GENERAL CONTRACTOR:

Flintlock Construction Services LLC

GLAZING CONTRACTOR:

Walsh Glass & Metal

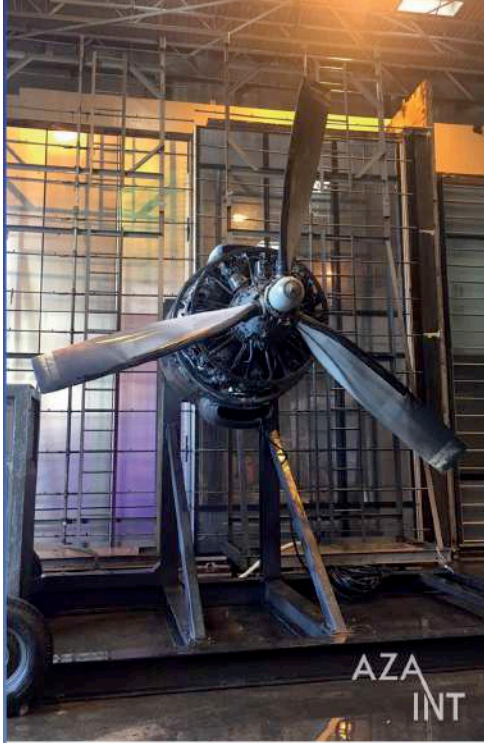
FACADE CONSULTANT:

FSA - Frank Seta & Associates

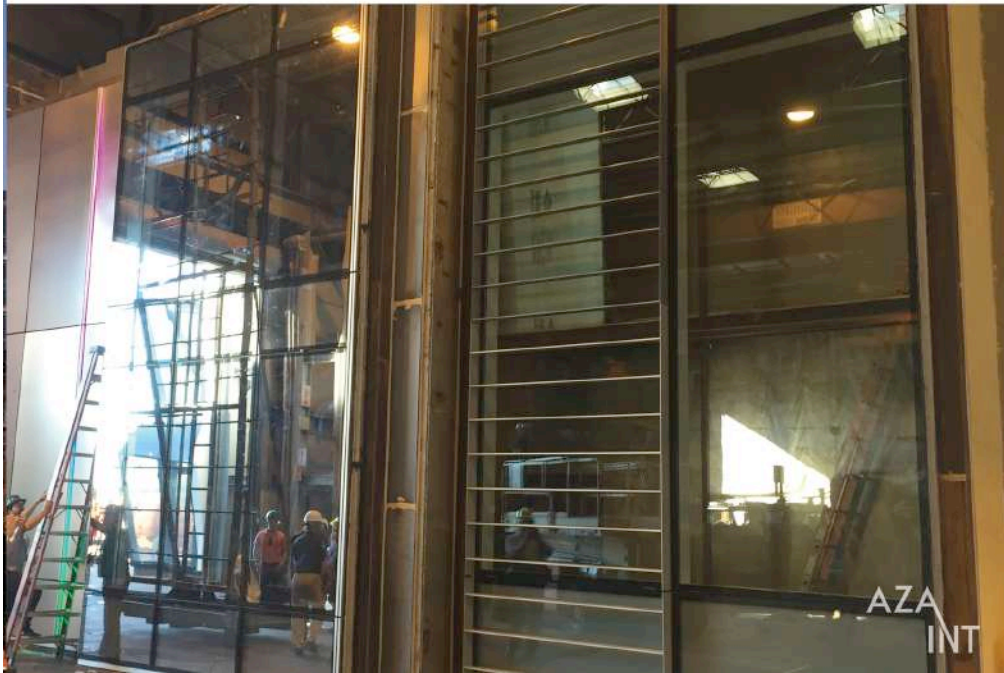
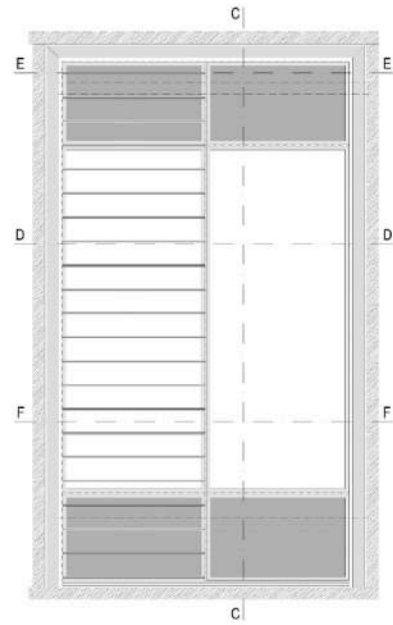
CLIENT:

AZA-INT Corporation





AZA
INT



AZA
INT



AZA
INT

SCOPE OF WORK:

Design, Engineering and Fabrication of 180,000 Sq Ft Unitized Curtain Wall for Tower and 45,000 Sq Ft Unitized Curtain Wall for Podium, Railings, Terrace Doors, Skylight and Stainless Steel Cladding.

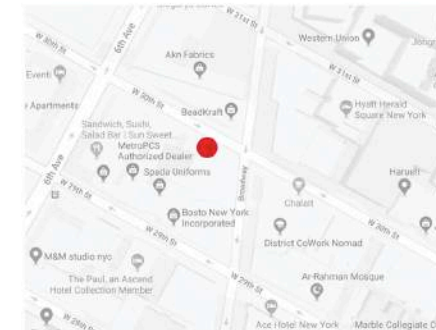
CHALLENGES:

High rise hotel building with 520 parallel projecting windows, 20 Ft high Unitized Curtain Wall panels at Podium, Railings integrated with Unitized Curtain Wall systems. 3D Unitized Curtain Wall panels with set back at corner panels.

GLASS MAKE UP:

Guardian Coating SN 70/41 (fully temp 1/2' - 11/16'' with argon - fully temp. 3/8'') at Podium, Guardian HP Silver 43/31 (fully temp. 5/16'' - 11/16'' with argon - fully temp. 5/16'').

PROJECT MAP:



HAP8

LOCATION:

215 West 28th Street, New York

ARCHITECT/DESIGNER:

Dxa Studio Architecture, PLLC

YEAR:

2017 - 2019

TYPE OF BUILDING:

Residential

DATA:

2 Buildings: 20 Floors + 20 Floors

DEVELOPER:

Hap Investments, LLC

CM/GENERAL CONTRACTOR:

HAP Constructions, LLC

GLAZING CONTRACTOR:

AZA US Corp.

FACADE CONSULTANT:

FSA - Frank Seta & Associates

SCOPE OF WORK:

Design, Engineering, Fabrication and Installation (partially) of: # 844 Punched Windows and Window Walls + Juliet Balcony + Glass Railings + #2 Stick System Facades

CLIENT:

AZA-INT Corporation





550 Washington

LOCATION:

550 Washington Street
New York

ARCHITECT/DESIGNER:

Cook Fox

YEAR:

2020

TYPE OF BUILDING:

Corporate / Office

DATA:

12 Floors

DEVELOPER:

Oxford Properties

CM/GENERAL CONTRACTOR:

Turner Construction

GLAZING CONTRACTOR:

W&W Glass

FACADE CONSULTANT:

GMS LLP

SCOPE OF WORK:

Design, Engineering, and Fabrication of
200,000 Sq Ft of Unitized Curtain Wall
(130,000 Sq Ft of Double Skin Facade)

CLIENT:

AZA-INT Corporation

Spence Athletic Center

LOCATION:

412 East 90th Street, New York

ARCHITECT/DESIGNER:

Rogers Partners LLP

YEAR:

2018 - 2019

TYPE OF BUILDING:

Educational

DATA:

6 Floors

DEVELOPER:

Spence School

CM/GENERAL CONTRACTOR:

Gilbane, Inc.

GLAZING CONTRACTOR:

Walsh Glass & Metal

FACADE CONSULTANT:

Front Inc.

SCOPE OF WORK:

Design, Engineering and Fabrication of: 8780 Sq Ft of full customized system with triangular fins

CLIENT:

AZA-INT Corporation





Gilder

LOCATION:

415 Columbus Avenue
New York

ARCHITECT/DESIGNER:

Studio Gang

YEAR:

2020

TYPE OF BUILDING:

Educational

DATA:

5 floors

DEVELOPER:

AECOM Tishman

CM/GENERAL CONTRACTOR:

AECOM Tishman

GLAZING CONTRACTOR:

W&W Glass

FACADE CONSULTANT:

Buro Happold

SCOPE OF WORK:

Design, Engineering, and Fabrication
of 10,000 Sq Ft of Special Customized
Windows

CLIENT:

AZA-INT Corporation

AZA
INT

39 - 40 23rd Street

LOCATION:

39 - 40 23rd Street, New York

ARCHITECT/DESIGNER:

Cookfox Architects, Dpc

YEAR:

2017 - 2018

TYPE OF BUILDING:

Residential

DATA:

2 Buildings: 24 Floors + 10 Floors

DEVELOPER:

Anbau Enterprises Inc.

CM/GENERAL CONTRACTOR:

Ryder Construction

GLAZING CONTRACTOR:

Walsh Glass & Metal

FACADE CONSULTANT:

James R. Gainfort Aia Consulting
Architects PC

CLIENT:

AZA-INT Corporation





SCOPE OF WORK:

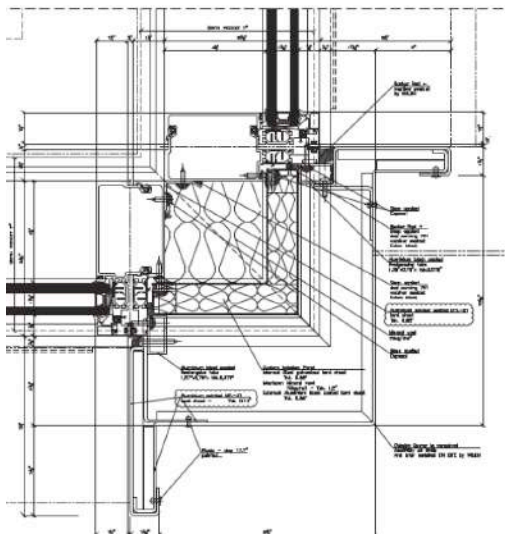
Design, Engineering and Fabrication of: 25,000 Sq Ft of Window Wall AZA INT + 4,200 Sq Ft of Ornamental Railings + 1,100 Sq Ft of Glass Railings + 16,000 Sq Ft of Metal Cladding + 3,500 Sq Ft of Aluminum Sills.

CHALLENGES:

Windows, Terrace Doors and sliders certificated and labeled under NFRC Protocol - Ornamental and Glass railings developed with "slim" aluminum profiles.

GLASS MAKE UP:

AGC iPlus Energy NT on Clearlite (#2)
 1 - 1/4" IGU: 5/16" - 9/16" Argon - 3/8" Laminated.



PROJECT MAP:



112 Shawmut

LOCATION:

112 Shawmut Avenue, Boston,
Massachusetts

ARCHITECT/DESIGNER:

TAT

YEAR:

2019

TYPE OF BUILDING:

Residential

DATA:

14 Floors

DEVELOPER:

The Davis Companies

CM/GENERAL CONTRACTOR:

Suffolk Construction

GLAZING CONTRACTOR:

The Cheviot Corporation

FACADE CONSULTANT:

Simpson Gumpertz & Heger (SGH)

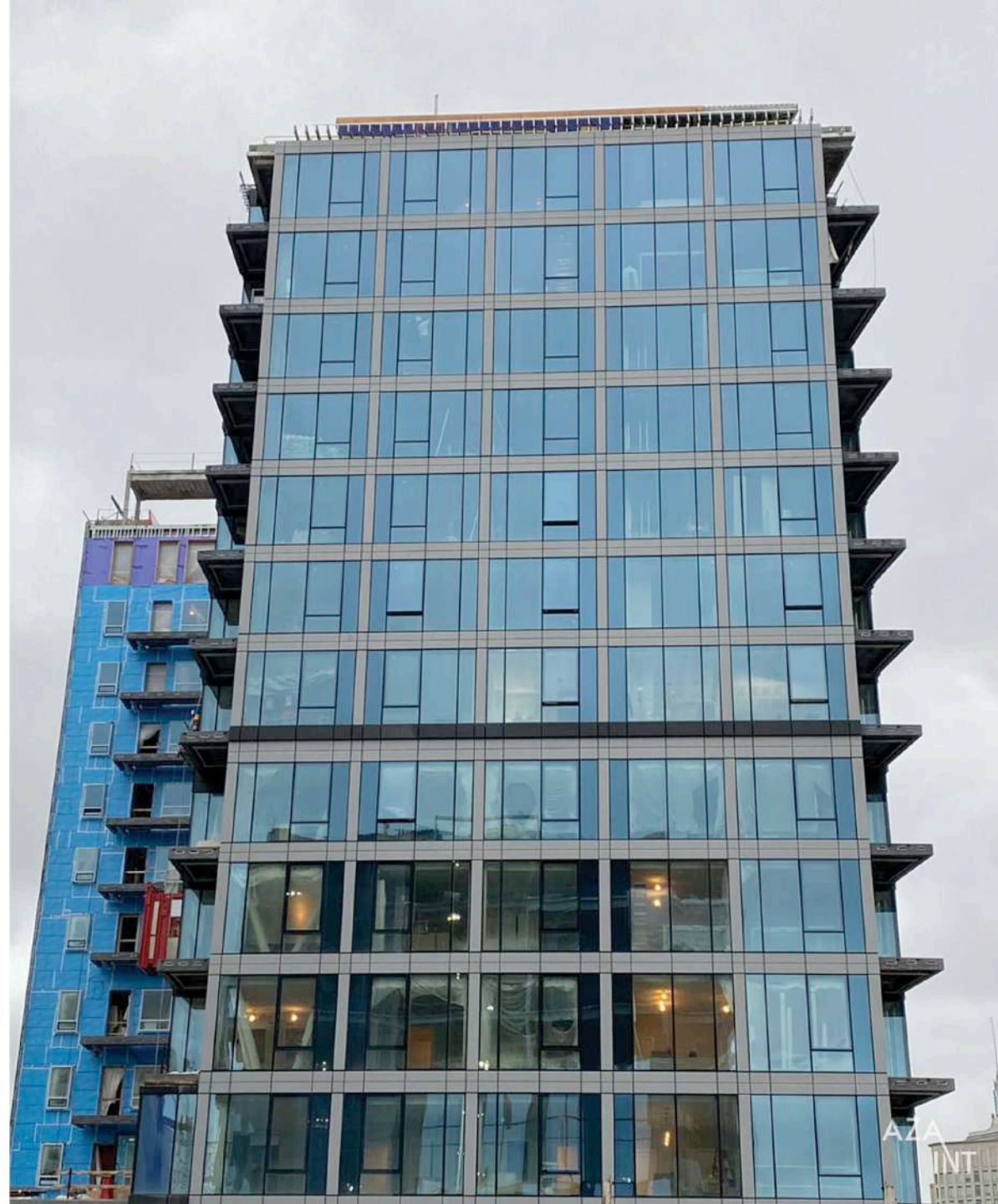
SCOPE OF WORK:

Design, Engineering and Fabrication of:
40,900 Sq Ft of Unitized Curtain Wall
+ 9,700 Sq Ft of Window Wall AZA US

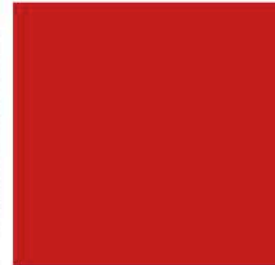
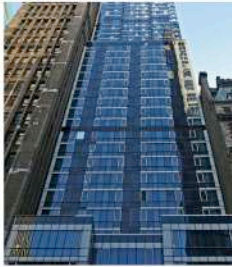
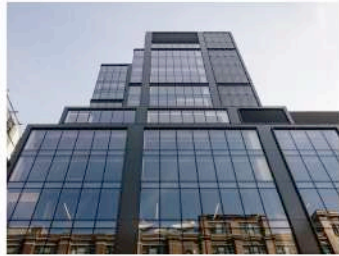
CLIENT:

AZA-INT Corporation





PROJECTS PORTFOLIO



Essex Crossing Site 3

LOCATION:

202 Broome Street, New York

ARCHITECT/DESIGNER:

CetraRuddy Architecture

YEAR:

2019

TYPE OF BUILDING:

Residential

DATA:

16 Floors

DEVELOPER:

Taconic Investment Partners,
LLC

CM/GENERAL CONTRACTOR:

Triton Construction

GLAZING CONTRACTOR:

Walsh Glass & Metal

FACADE CONSULTANT:

Eckersley O'Callaghan (EOC)

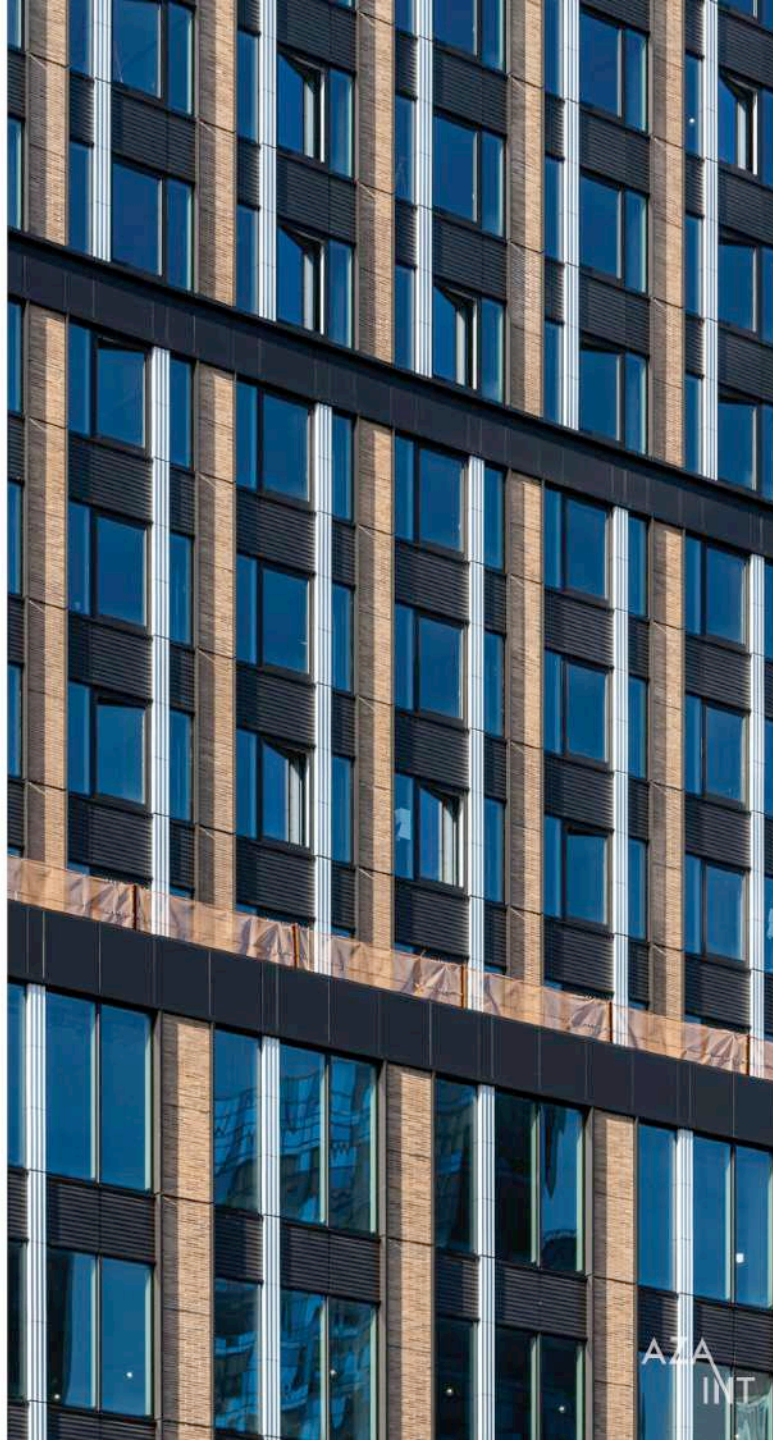
SCOPE OF WORK:

Design, Engineering and Fabrication of 111,000 Sq Ft of AZA US Curtain Wall 2,260 Sq Ft of Window Wall + metal and brick Cladding + aluminum Fins + 300 vents

CLIENT:

AZA-INT Corporation





SCOPE OF WORK:

Design, Engineering, Fabrication of 111,000 Sq Ft of AZA US Curtain Wall, 2,260 Sq Ft of Window Wall + Metal and Brick Cladding + Aluminum Fins + 300 Vents

CHALLENGES:

Custom Tilt&Turn windows 5' x 9' inserted in the unitized system and stone veneer panels. Glazed in the units. The facade is a mix of stone and glass panels one different to the others.

GLASS MAKE UP:

5/16" Extraclear Guardian SN 70/37 #2 - argon - 3/16" + 3/16" Extraclear laminated

PROJECT MAP:



Two Drydock

LOCATION:

2 Drydock Avenue, Boston,
Massachusetts

ARCHITECT/DESIGNER:

SGA Architecture

YEAR:

2018-2019

TYPE OF BUILDING:

Offices/Residential/Commercial

DATA:

13 Floors

DEVELOPER:

Skanska USA

CM/GENERAL CONTRACTOR:

Skanska USA

GLAZING CONTRACTOR:

The Cheviot Corporation

FACADE CONSULTANT:

Simpson Gumperts & Heger Inc.
(SGH)

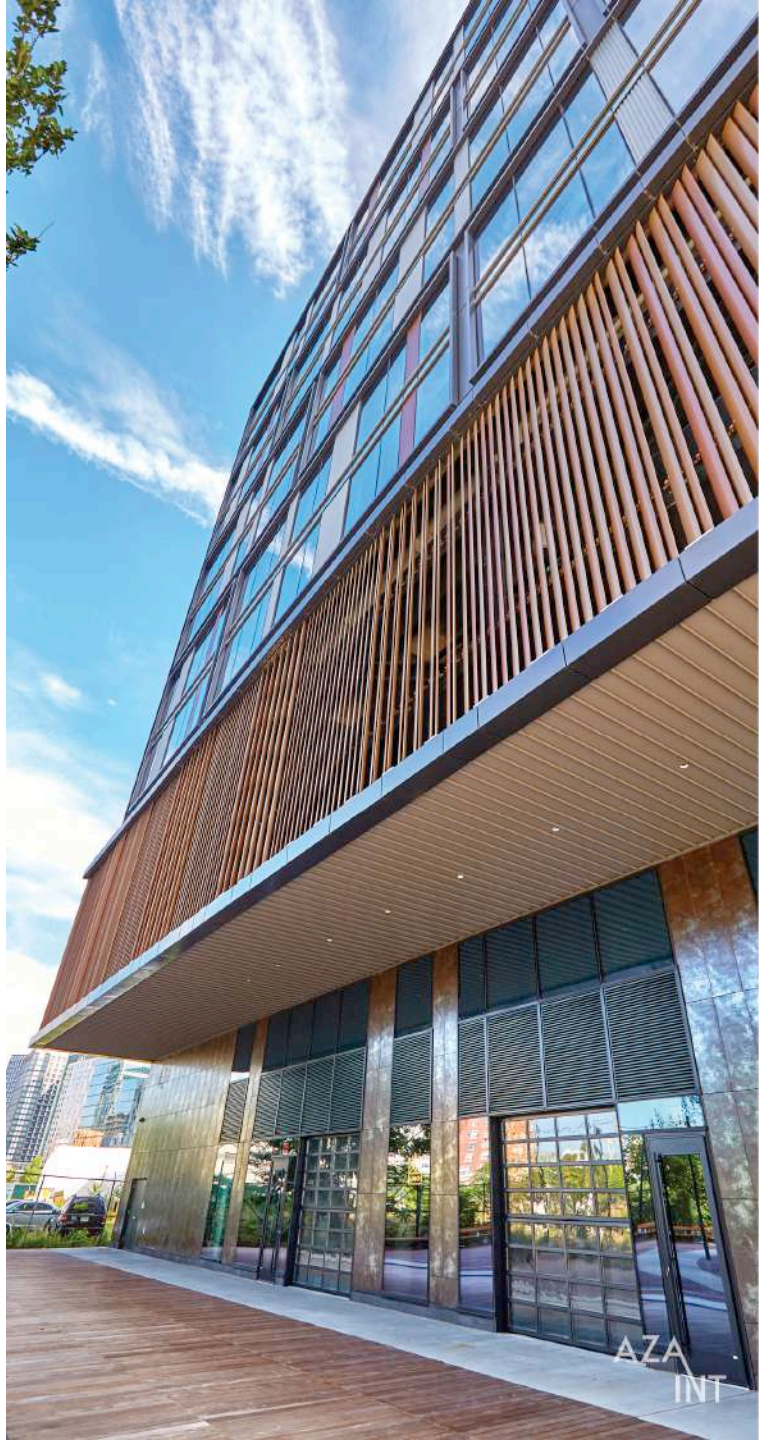
SCOPE OF WORK:

Design, Engineering and Fabrication of
69,200 Sq Ft of AZA US Curtain Wall
HI + 9,300 Sq Ft of Stick built system
+ 22,300 Sq Ft of stainless steel metal
mesh and fins

CLIENT:

AZA-INT Corporation





SCOPE OF WORK:

Design, Engineering, Fabrication of 69,200 Sq Ft of AZA US Curtain Wall HI + 9,300 Sq Ft of Stick Built System + 22,300 Sq Ft of Stainless Steel Metal Mesh and Fins

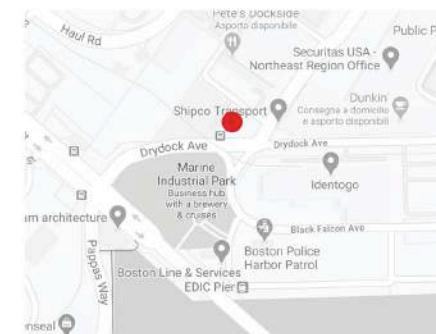
CHALLENGES:

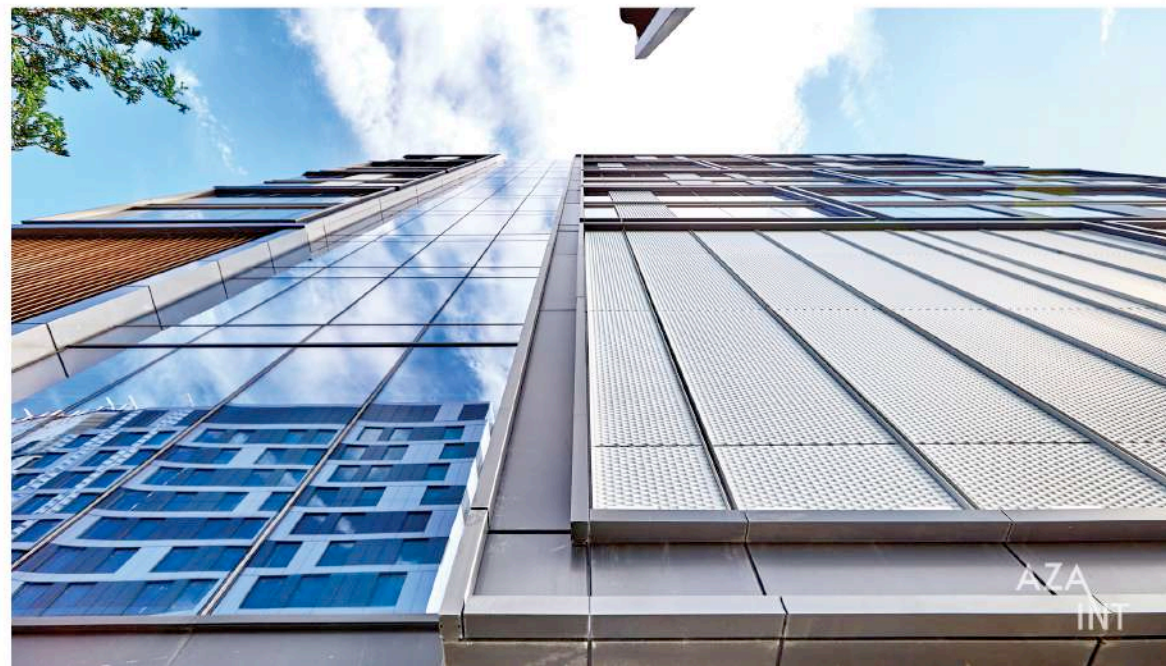
Curtain wall system with infill corrugated metal sheet and special fins and metal fascia. . Different corner angles and conditions with special transitions, unitized megapanel with anodized metal mesh

GLASS MAKE UP:

1/4" Guardian HS Extraclear SN 51/28 -argon - 1/4"Guardian Extraclear Fully Tempered

PROJECT MAP:







SCOPE OF WORK:

Design, Engineering, Fabrication of 69,200 Sq Ft of AZA US Curtain Wall HI + 9,300 Sq Ft of Stick Built System + 22,300 Sq Ft of Stainless Steel Metal Mesh and Fins

CHALLENGES:

Curtain wall system with infill corrugated metal sheet and special fins and metal fascia. . Different corner angles and conditions with special transitions, unitized megapanel with anodized metal mesh

GLASS MAKE UP:

1/4" Guardian HS Extraclear SN 51/28 -argon - 1/4"Guardian Extraclear Fully Tempered

PROJECT MAP:



Triangle

LOCATION:

43/12 Hunter Street, Long Island City,
New York

ARCHITECT/DESIGNER:

Slce Architects, LLP

YEAR:

2018-2019

TYPE OF BUILDING:

Residential

DATA:

19 Floors

DEVELOPER:

Rockrose LLC

CM/GENERAL CONTRACTOR:

Rockrose Dev. LLC

GLAZING CONTRACTOR:

Walsh Glass & Metal

FACADE CONSULTANT:

Thorton Tomasetti

SCOPE OF WORK:

Design, Engineering and Fabrication of
68,350 Sq Ft of AZA US Curtain Wall

CLIENT:

AZA-INT Corporation



The Getty

LOCATION:

239 10th Avenue, New York

ARCHITECT/DESIGNER:

Peter Marino

YEAR:

2015- 2016

TYPE OF BUILDING:

Residential

DATA:

12 Floors

DEVELOPER:

Victor Group

CM/GENERAL CONTRACTOR:

LendLease

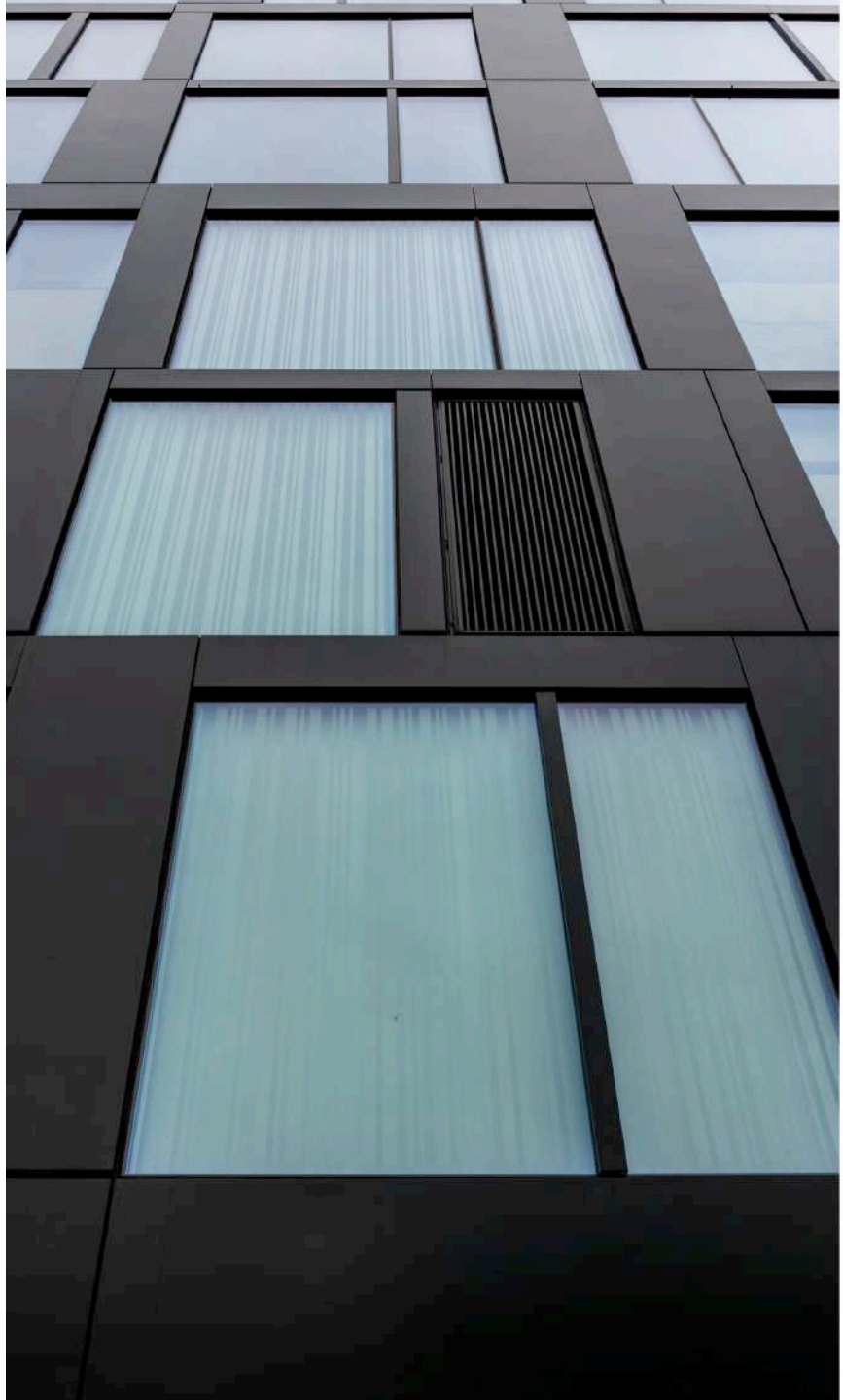
GLAZING CONTRACTOR:

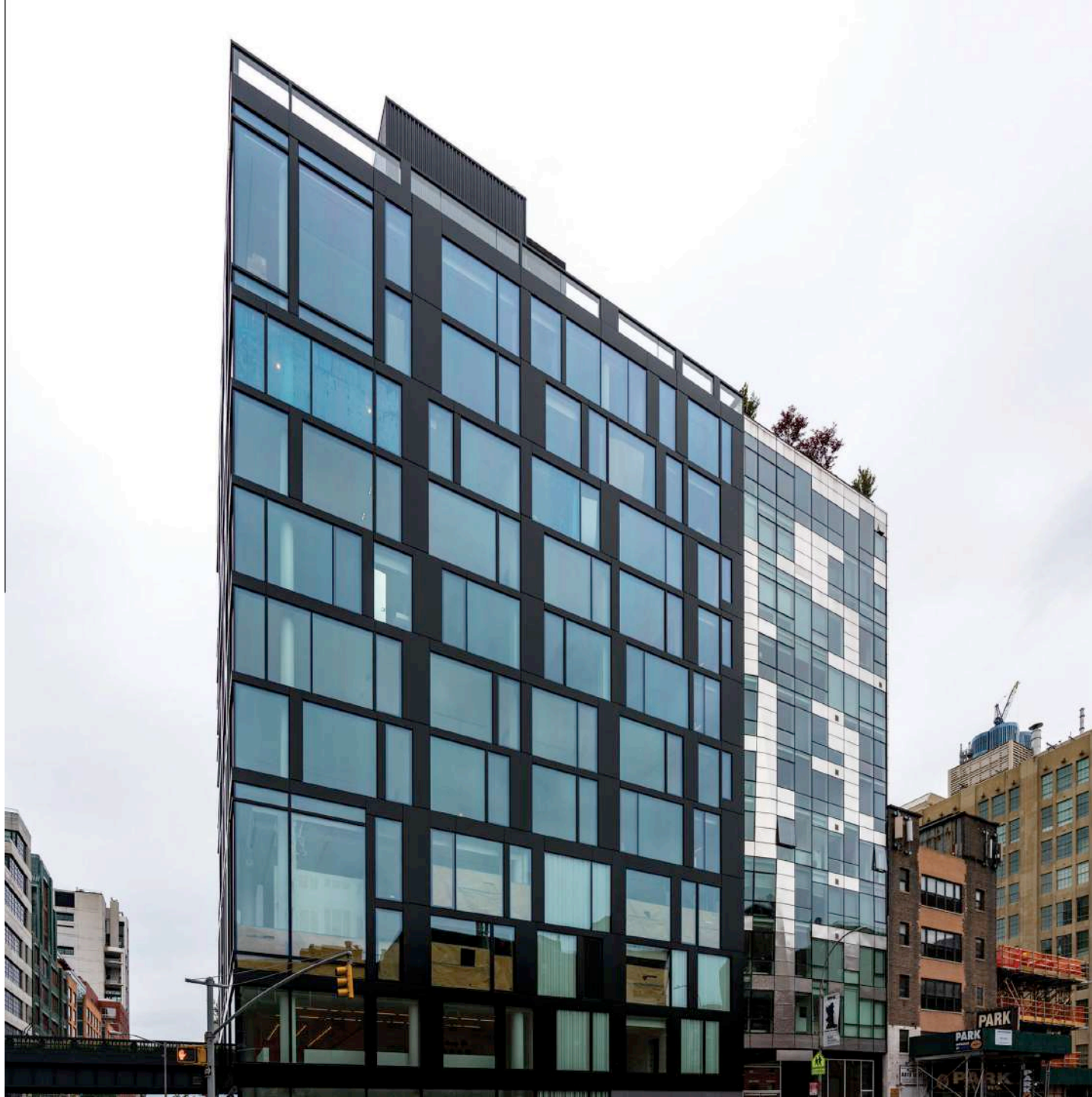
W&W Glass / Walsh Glass & Metal

FACADE CONSULTANT:

Vidaris Inc.







SCOPE OF WORK:

Design, Engineering and Fabrication of 27,000 Sq Ft Wicona Unitized Curtain Wall, Glass Balustrades, Sliding Doors & Metal Panels.

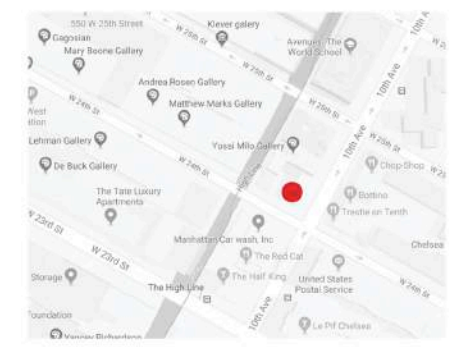
CHALLENGES:

Each glass lite has different dimensions. All 159 units are glazed with low iron glass dimension up to 22' x 10'. Facade is completed with Wicona motorized projecting out operable Vents 4' x 10' tall.

GLASS MAKE UP:

Interpane Ipson Neutral 69/37 (1" 3/4 IGU: 1/2" - air - 3/8" + 3/8" laminated).

PROJECT MAP:



412W 15th Street

LOCATION:

412 West 15th Street, New York

ARCHITECT/DESIGNER:

CetraRuddy Architecture

YEAR:

2016 - 2017

TYPE OF BUILDING:

Offices

DATA:

20 Floors

DEVELOPER:

Rockpoint Group

CM/GENERAL CONTRACTOR:

Triton Construction

GLAZING CONTRACTOR:

Walsh Glass & Metal

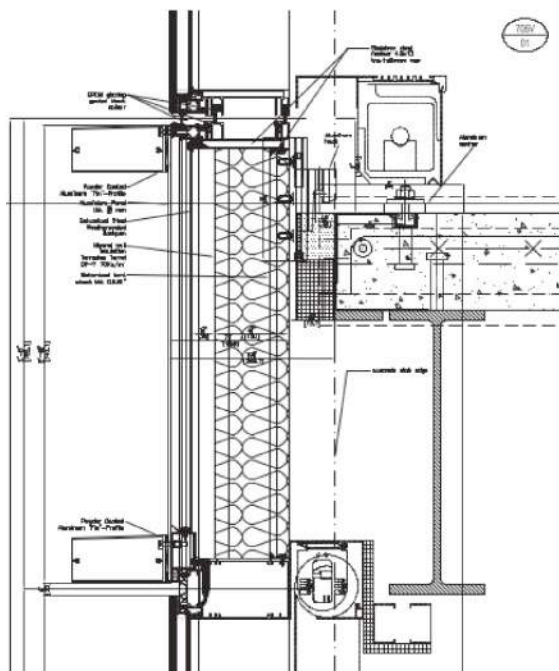
FACADE CONSULTANT:

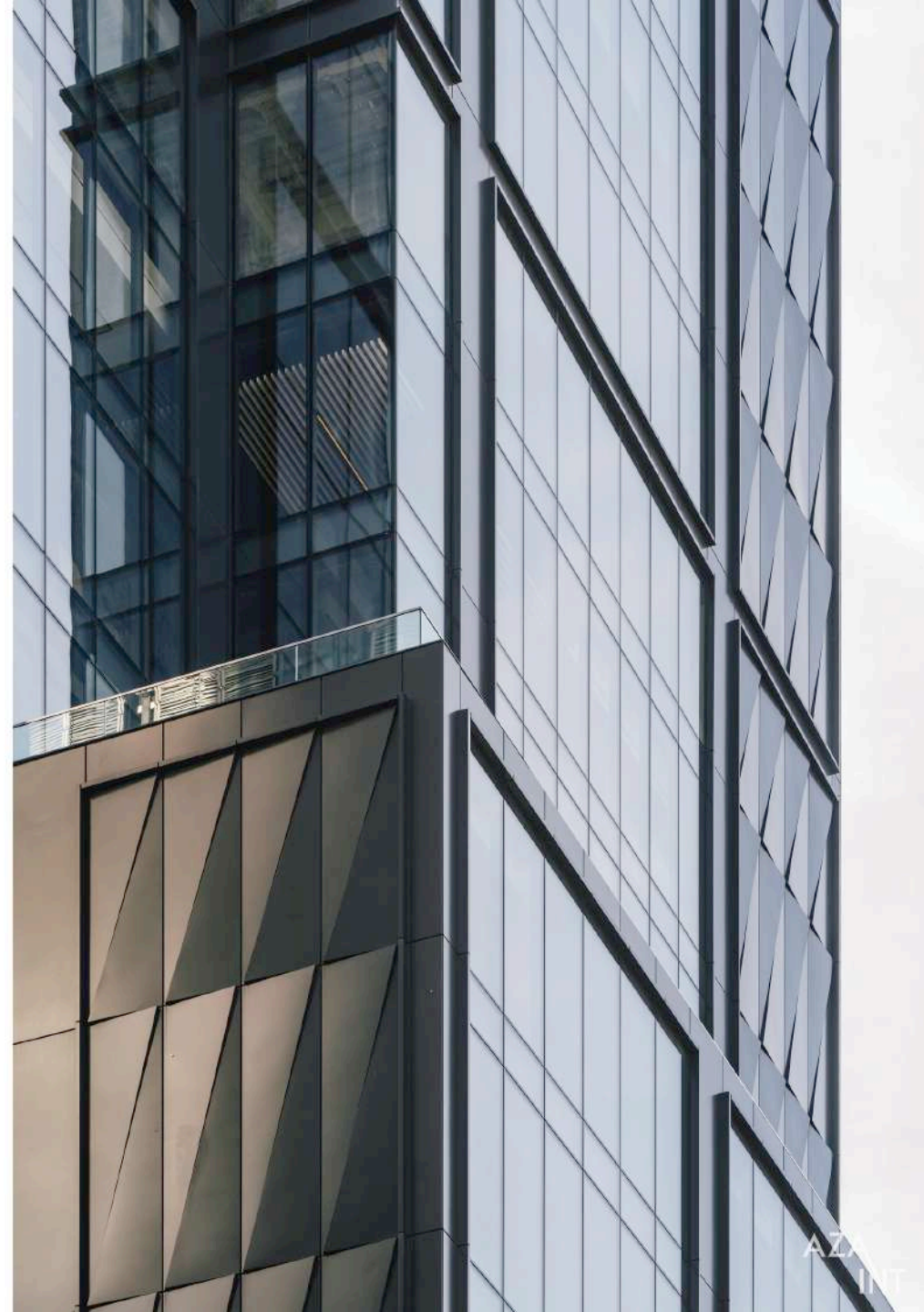
GMS - Gilsanz, Murray and Steficek

CLIENT:

AZA-INT Corporation







AZUL



SCOPE OF WORK:

Design, Engineering and Fabrication of 67,000 Sq Ft of Unitized Curtain Wall Wicona/AZA US.

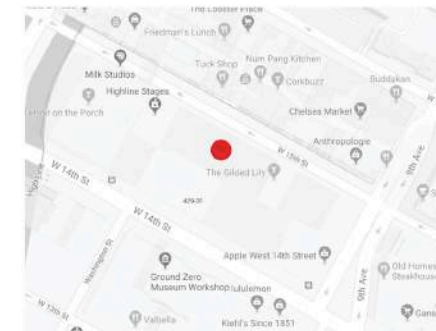
CHALLENGES:

7' wide x 11' tall preglazed corner units. Facade is complete with custom Aluminum Panels up to 15' tall with diagonal reveal.

GLASS MAKE UP:

Guardian SunGuard SN 70/41 ExtraClear (#2), 1 - 1/4" IGU: 3/8" - 5/8" Air - 1/4".

PROJECT MAP:



2000 Ross

LOCATION:

2000 Ross Avenue, Dallas, Texas

ARCHITECT/DESIGNER:

HKS

YEAR:

2018

TYPE OF BUILDING:

Multi - level parking/Hotel

DATA:

10 Floors

DEVELOPER:

Streamrealty

CM/GENERAL CONTRACTOR:

Austin Commercial, LP

GLAZING CONTRACTOR:

Haley - Greer Inc.

FACADE CONSULTANT:

CDC - Curtainwall Design Consulting

SCOPE OF WORK:

Design, Engineering and Fabrication
of 55,500 Sq Ft

Custom Curtain Wall + 8,500 Sq Ft
CWT 3.0 + glass + break metals

CLIENT:

AZA-INT Corporation





CHALLENGES:

The apparently unbroken surface will have a silk-screen printed opaline double glazing which, suitably backlit by night, will become a hallmark, highly-recognizable feature of the urban panorama.

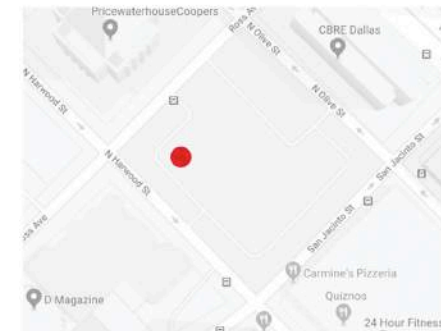
GLASS MAKE UP:

Shingled facade: 1/4" [6mm] ultraclear, gradient frit #2 RAL 9003 heat strengthened 1/2" [12mm] air 1/4" [6mm] ultraclear simulated Acid Etched 332 #3 tempered + HST.

Standard CW: 5/16" [8mm] ultraclear neutral HP 50/32 #2 not stripped – heat strengthened/air space 1/2" [12mm] air 5/16" [8mm] ultraclear simulated Acid Etched 332 #3 tempered + HST.

Glass at reveal: 1/4" [6mm] ultraclear heat strengthened 1/2" [12mm] air 1/4" [6mm] ultraclear, simulated. Acid Etched 332 #3 tempered + HST.

PROJECT MAP:



145W

LOCATION:

145 West Street, Brooklyn, New York

ARCHITECT/DESIGNER:

Ismael Leyva Architects

YEAR:

2016 - 2017

TYPE OF BUILDING:

Residential

DATA:

39 + 3 Floors

DEVELOPER:

Mack Real Estate

CM/GENERAL CONTRACTOR:

Noble Construction Group

GLAZING CONTRACTOR:

Walsh Glass & Metal

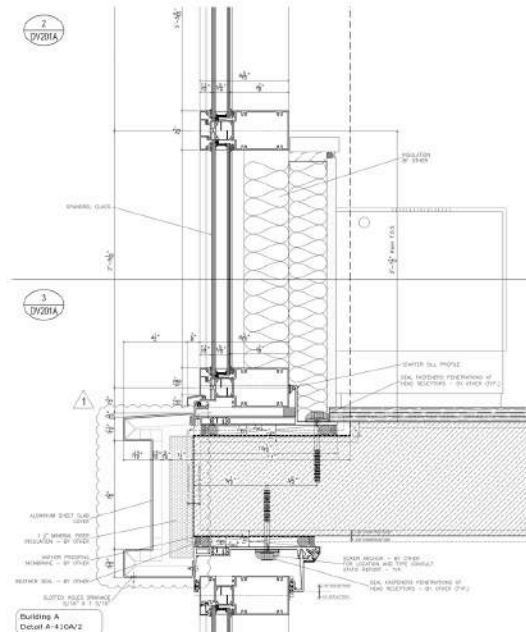
FACADE CONSULTANT:

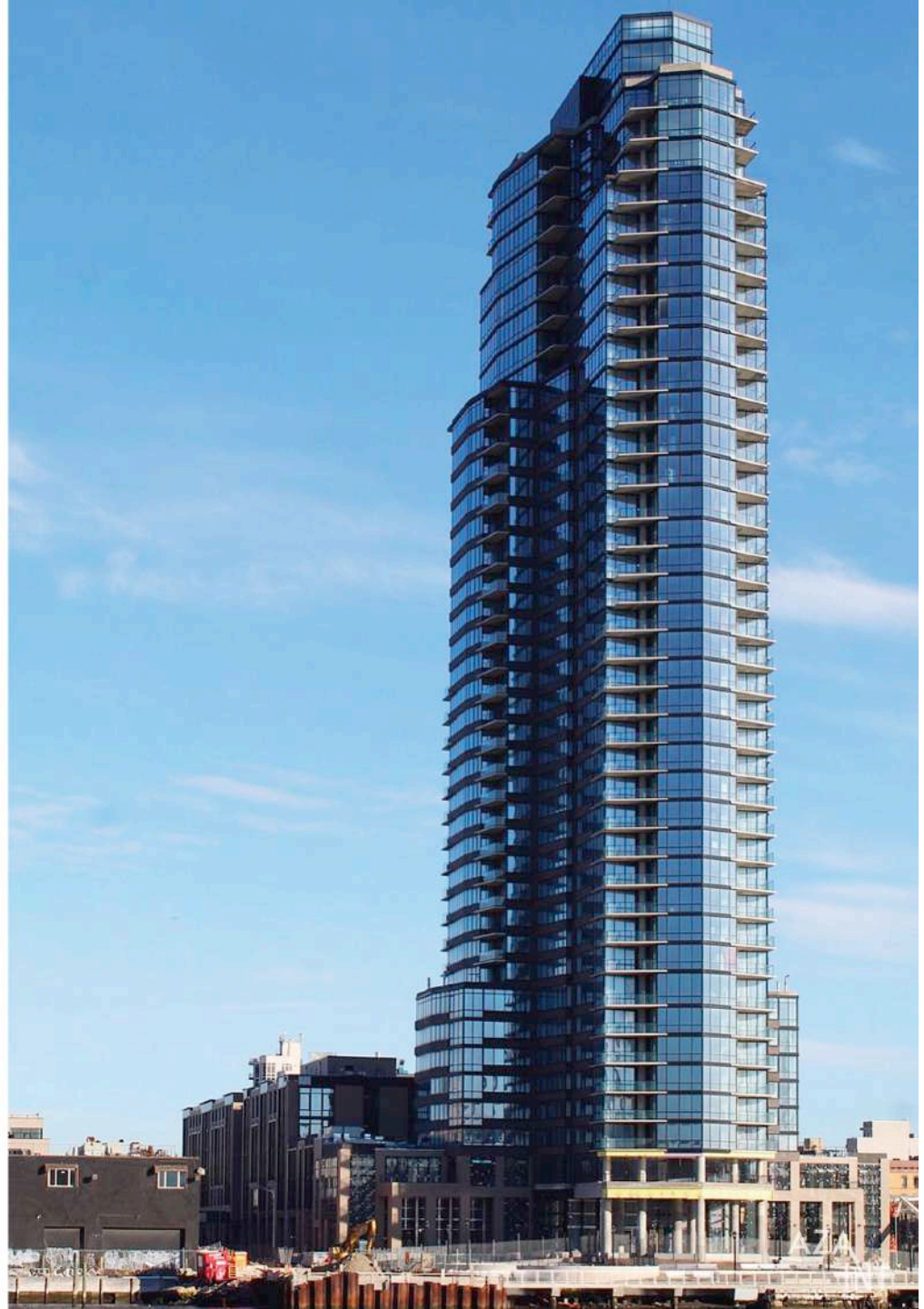
CANY

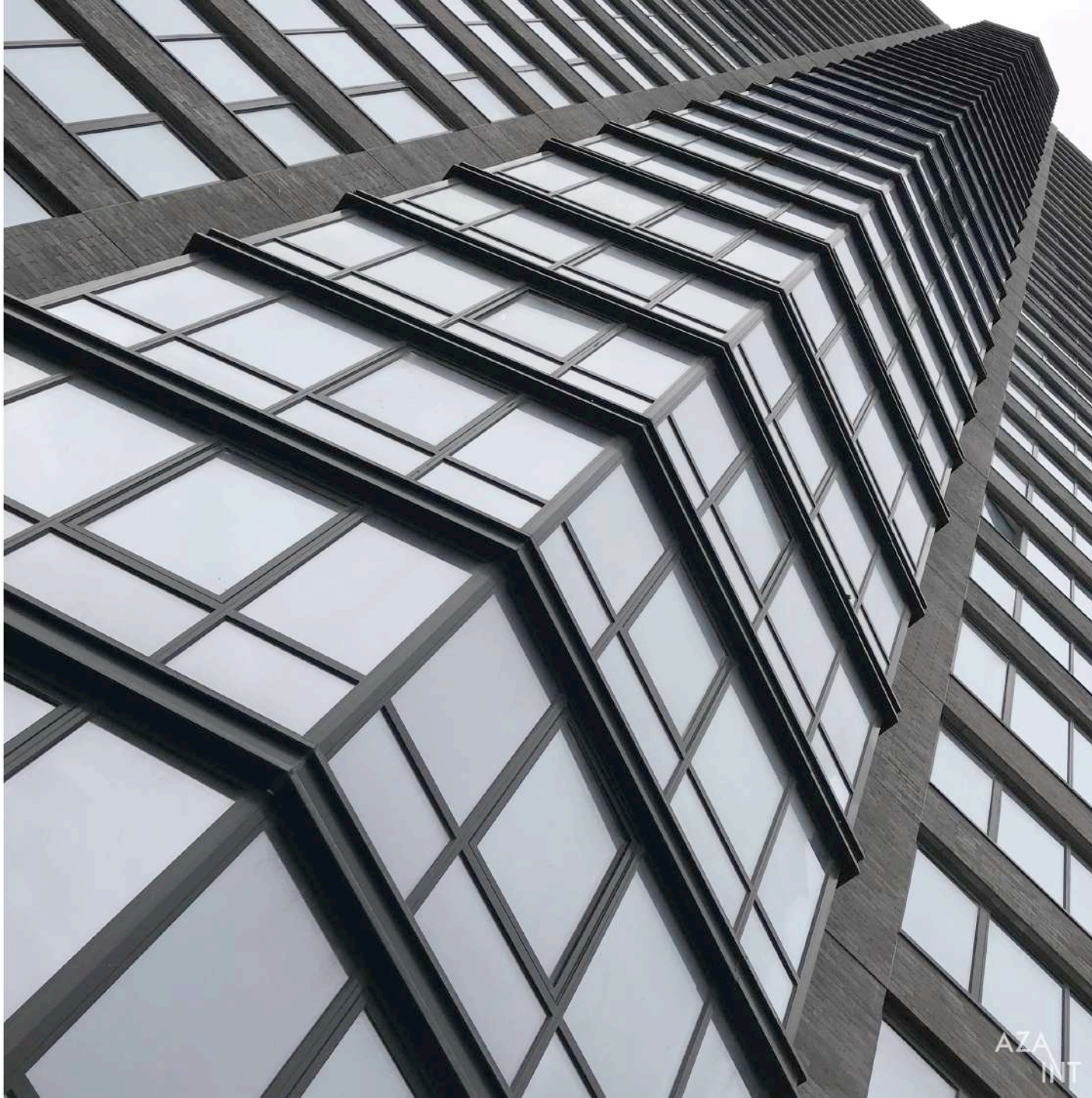
CLIENT:

AZA-INT Corporation









SCOPE OF WORK:

Design, Engineering and Fabrication of 190,000 Sq Ft of Window Wall Units, and External Perimetral Fins.

CHALLENGES:

More than 5,500 custom Window Wall units, with Tilt&Turn Operable Vents, and Terrace Doors.

11,500 Lft of Custom design Slab Covers fascia with aluminum Fins.

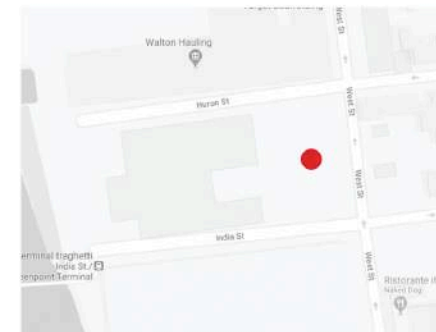
GLASS MAKE UP:

Stopray Smart 51/33

1 - 5/16" IGU: 5/16" - spacer - 1/4"

Ug value = 0.22 Btu/ft2 hr °F.

PROJECT MAP:



Essex Crossing

LOCATION:

242 Broome Street, New York

ARCHITECT/DESIGNER:

Slice Architects, LLP
Shop Architects, LLP

YEAR:

2015 - 2018

TYPE OF BUILDING:

Residential

DATA:

15 Floors

DEVELOPER:

Taconic Investment Partners, LLC

CM/GENERAL CONTRACTOR:

Triton Constructions

GLAZING CONTRACTOR:

Walsh Glass & Metal

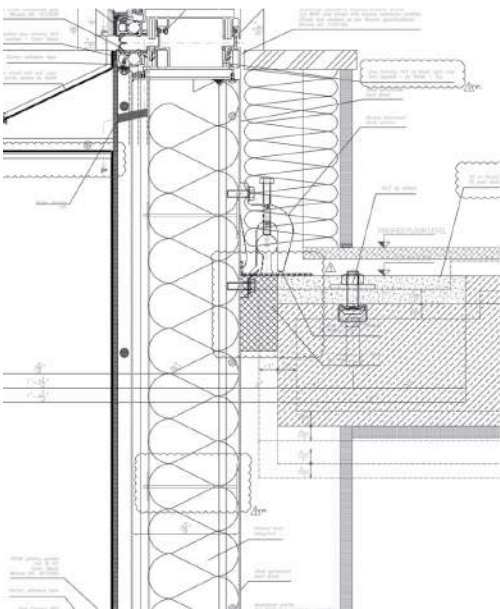
FACADE CONSULTANT:

FSA - Frank Seta & Associates

CLIENT:

AZA-INT Corporation







21 - 30 44th Drive

LOCATION:

21 - 30 44th Drive, Long Island City,
New York

ARCHITECT/DESIGNER:

Beyer Blinder Belle Architect
Diegues Fridman

YEAR:

2018

TYPE OF BUILDING:

Residential/Commercial

DATA:

8 Floors

DEVELOPER:

SK Ironstate

CM/GENERAL CONTRACTOR:

CMA

GLAZING CONTRACTOR:

Walsh Glass & Metal

FACADE CONSULTANT:

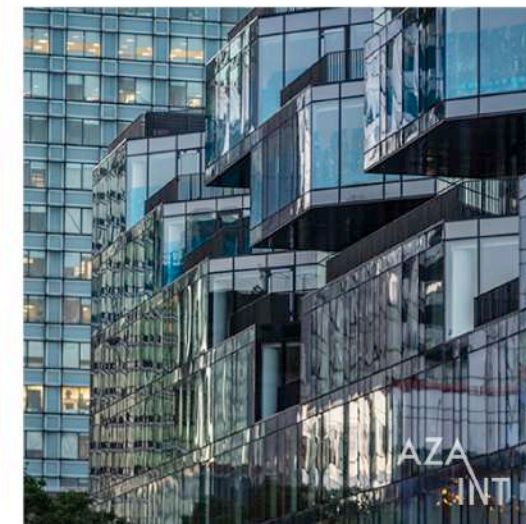
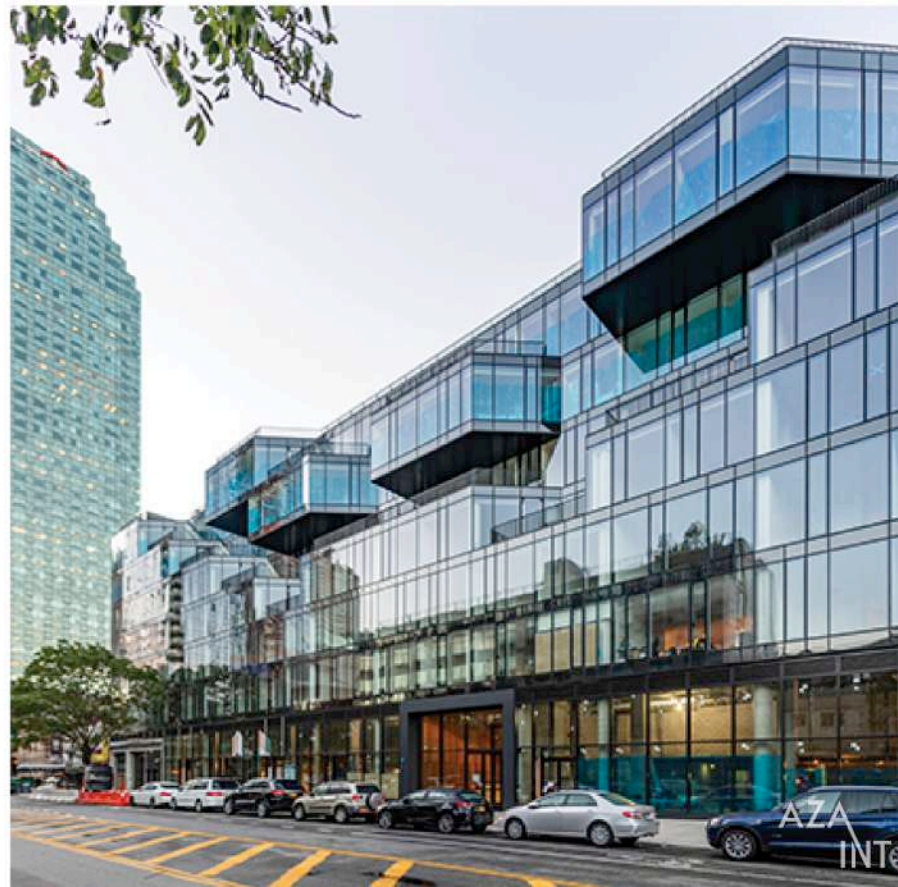
FSA - Frank Seta & Associates

SCOPE OF WORK:

Design, Engineering and Fabrication
of 35,900 Sq Ft Curtain Wall + 263
Operable Windows + 19 Terrace Doors
+ copings and internal metal trims

CLIENT:

AZA-INT Corporation





SCOPE OF WORK:

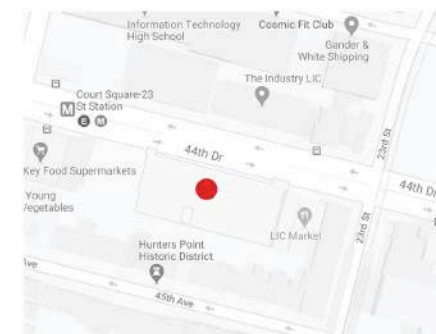
Design, Engineering, Fabrication of 35,900 Sq Ft Curtain Wall + 263 Operable Windows + 19 Terrace Doors + Copings and Internal Metal Trims.

CHALLENGES:

Unifized curtain wall system with lots of transitions and interfaces with projecting part of the facade. Different corner conditions and modules of units.

GLASS MAKE UP:

Guardian: 5/16" Sunguard SN 70/41 HT #2 tempered HST, 13/16" airspace, 1/4" float glass tempered HST.



88 & 90 Lex Penthouse

LOCATION:

88 Lexington Avenue, New York

ARCHITECT/DESIGNER:

Workshop Apd

YEAR:

2018

TYPE OF BUILDING:

Residential

DATA:

Residential Penthouse

DEVELOPER:

HFZ Capital Group

CM/GENERAL CONTRACTOR:

AJL + P Consulting

GLAZING CONTRACTOR:

Walsh Glass & Metal

FACADE CONSULTANT:

AJL + P Consulting

CLIENT:

AZA-INT Corporation





SCOPE OF WORK:

Design, Engineering and Fabrication of 430 Sq Ft Custom Curtain Wall spandrel + Terrace + Doors + Parapets.

CHALLENGES:

AZA US/Wicona Unitized Curtain Wall system four sided structurally glazed along with Terrace Doors (Wiclone 65 and Wiclone 160 Lift & Slide). Complex logistics with limited storage capacity.

GLASS MAKE UP:

Interpane Coating 3/8" spacer 5/32" + 5/32" fully tempered HST.

PROJECT MAP:



Cornell Tech

LOCATION:

2W Loop Road
Roosevelt Island, New York

ARCHITECT/DESIGNER:

Handel Architects

YEAR:

2015 - 2016

TYPE OF BUILDING:

Residential, Educational

DATA:

26 Floors

DEVELOPER:

Related

CM/GENERAL CONTRACTOR:

Monadnock Construction Inc.

GLAZING CONTRACTOR:

Walsh Glass & Metal

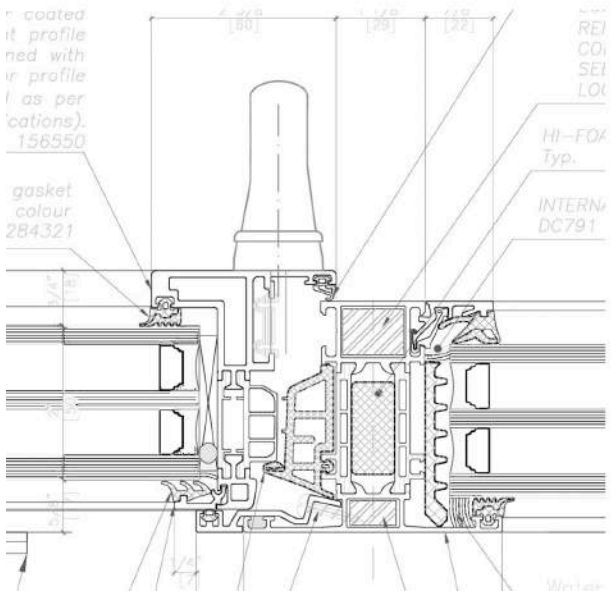
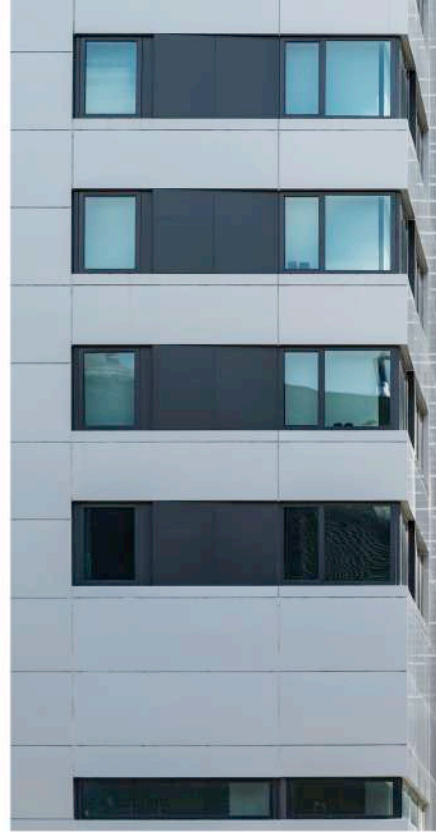
FACADE CONSULTANT:

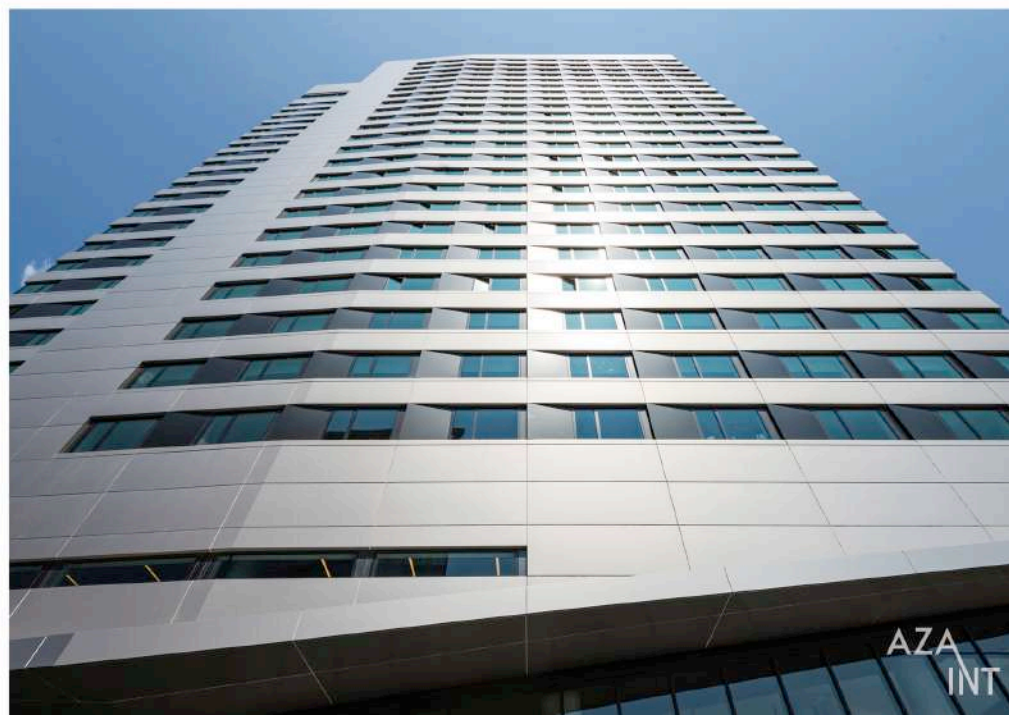
Vidaris, Inc.

CLIENT:

AZA-INT Corporation









SCOPE OF WORK:

Design, Engineering and Fabrication of 27,000 Sq Ft of High Insulated Windows.

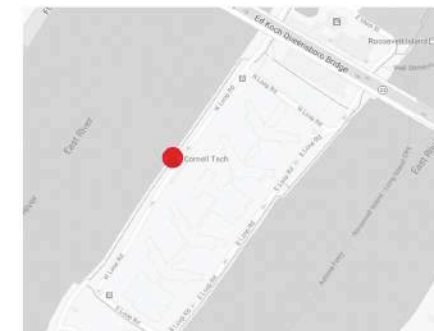
CHALLENGES:

Almost 1,000 High Insulated Windows engineered with Schuco AWS 75 SI system. This building is the first high-rise residential building in the World, designed and engineered under "Passive House" protocol.

GLASS MAKE UP:

Interpane Iplus Ultra Select 62/29 #2 + Iplus Top 1.1S #5.
1 - 15/16" TRIPLE IGU: 5/16" - W.E. spacer - 1/4" - W.E. spacer - 1/4"
Ug value = 0.11 Btu/ft² hr °F.

PROJECT MAP:



The Oosten

LOCATION:

429 Kent Avenue, Brooklyn, New York

ARCHITECT/DESIGNER:

Think! Architecture And Design

YEAR:

2018

TYPE OF BUILDING:

Residential

DATA:

10 Floors

DEVELOPER:

Xin Development Group International

CM/GENERAL CONTRACTOR:

Wonder Works

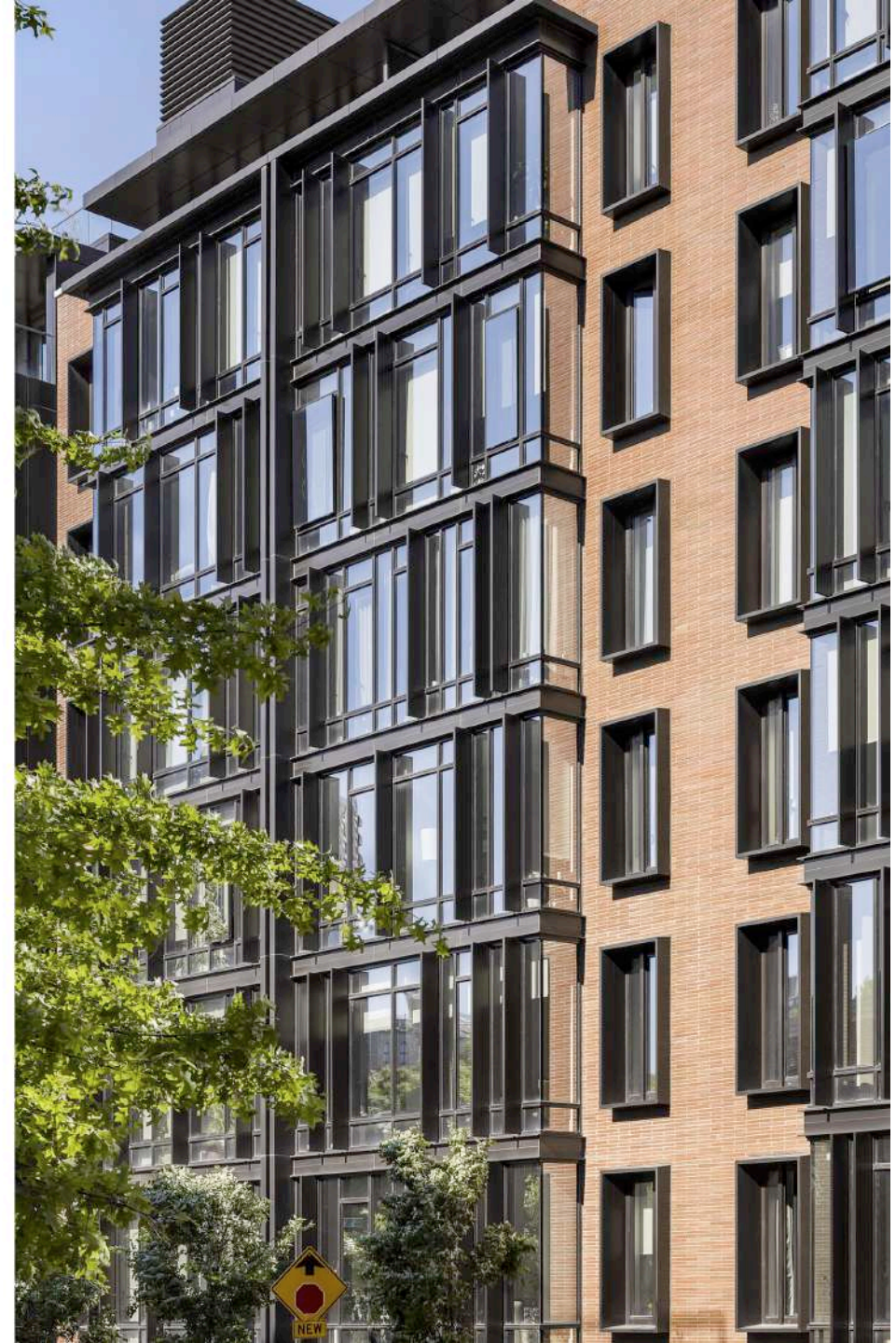
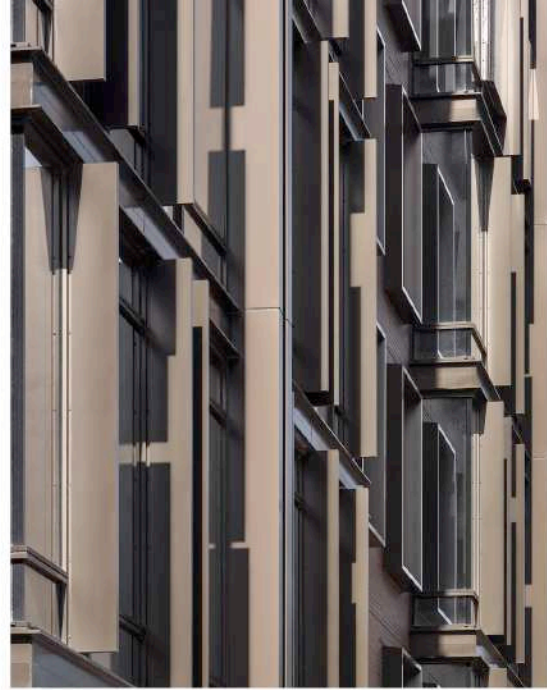
GLAZING CONTRACTOR:

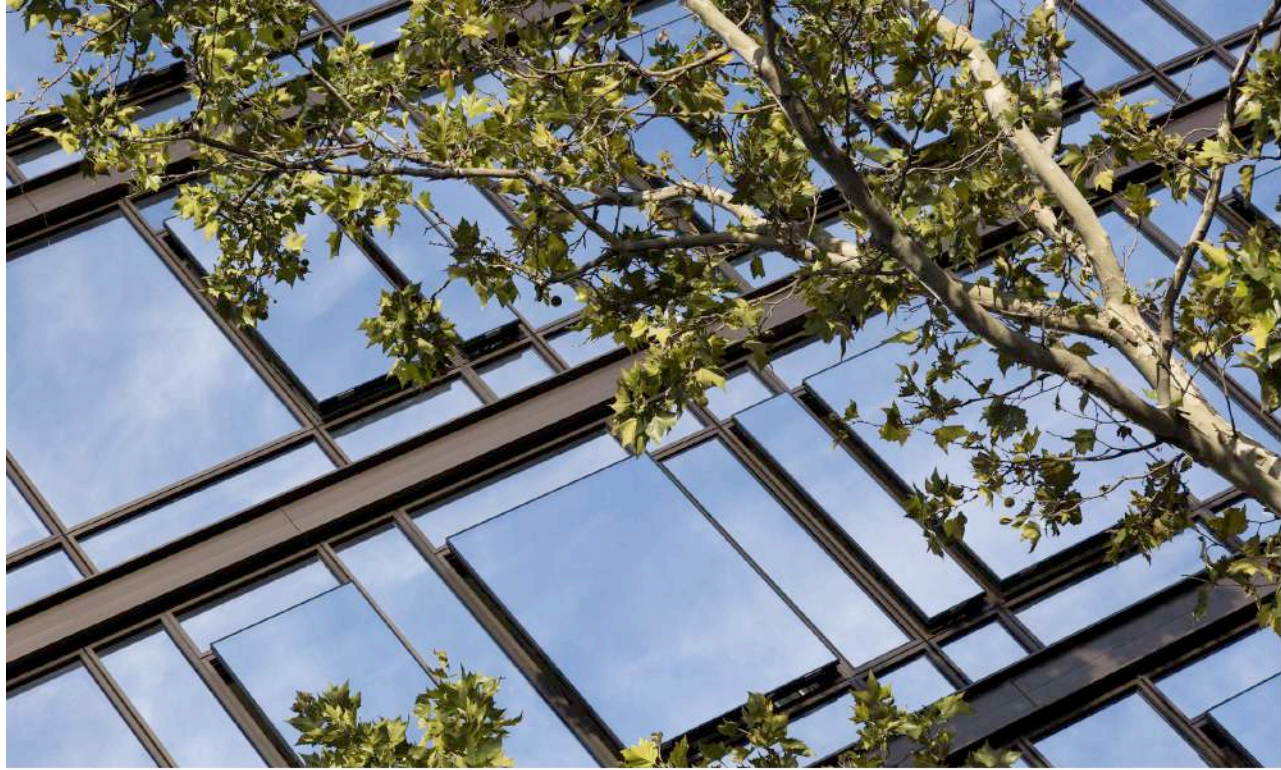
Walsh Glass & Metal

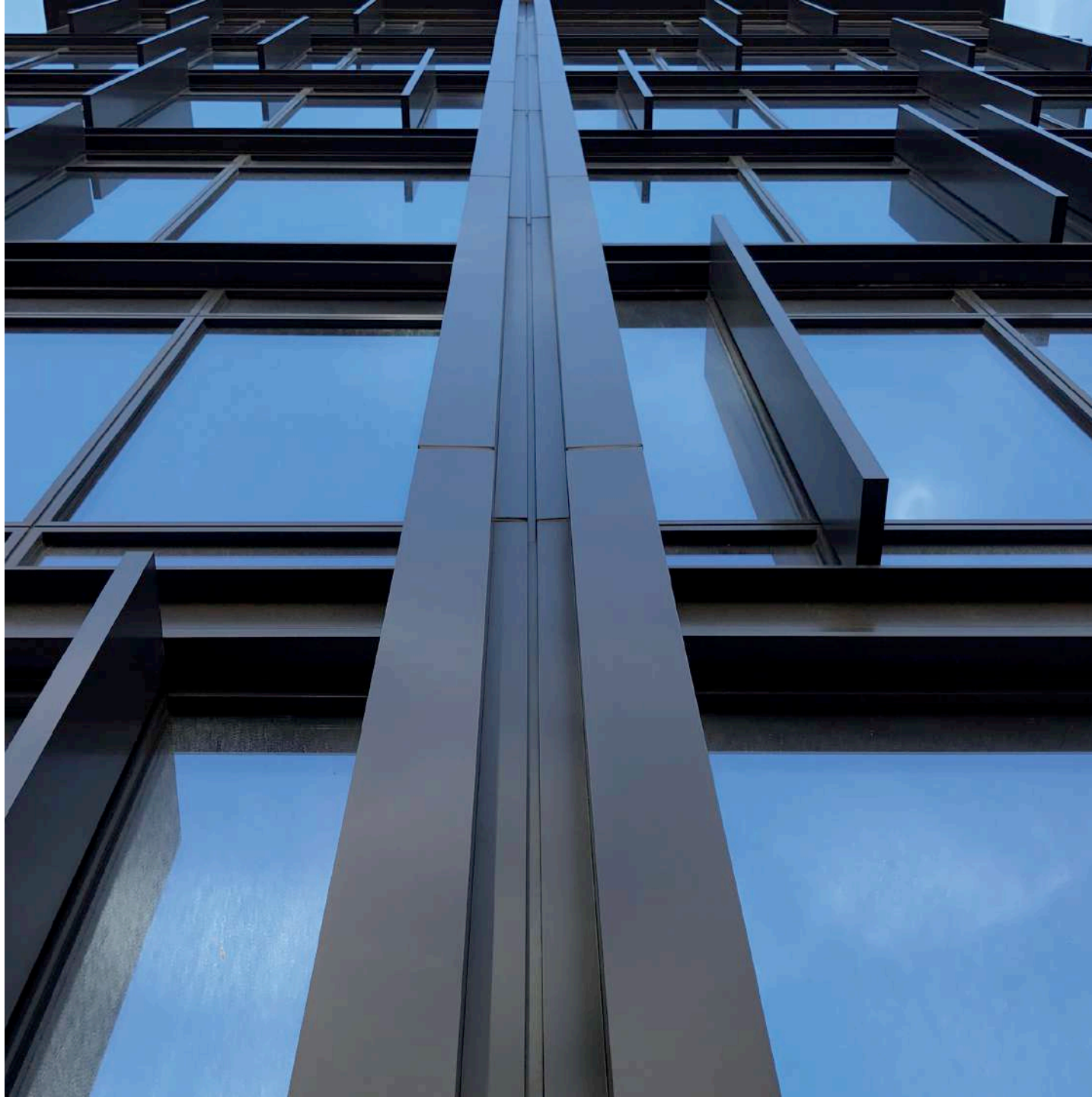
FACADE CONSULTANT:

Think! Architecture And Design









SCOPE OF WORK:

Design, Engineering and Fabrication of 95,000 Sq Ft Window Wall systems and Stick Built Storefront; Terrace Doors; Punch windows.

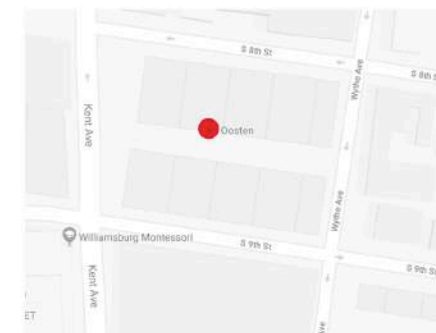
CHALLENGES:

1,150 parallel projecting windows; Window Wall units with an extreme high variety of glass sizes; vertical external aluminum Fin, Punch windows with external integrated aluminum Fins. Customized Slab Cover extrusion. (Unitized Curtain Wall acoustic performance: 31 and 33 OITC).

GLASS MAKE UP:

Interpane Coating Ipasol Platin and AGC Vision 50 (fully temp. 5/16" - 11/16" spacer with argon - 3/8" laminated).

PROJECT MAP:



Hilton Garden Inn

LOCATION:

136 West 42nd Street, Time Square,
New York

ARCHITECT/DESIGNER:

Peter F. Poon Architect P.C.

YEAR:

2014

TYPE OF BUILDING:

Hotel

DATA:

36 + 3 Floors

DEVELOPER:

Highgate Holding

CM/GENERAL CONTRACTOR:

Flintlock Construction Services, LLC

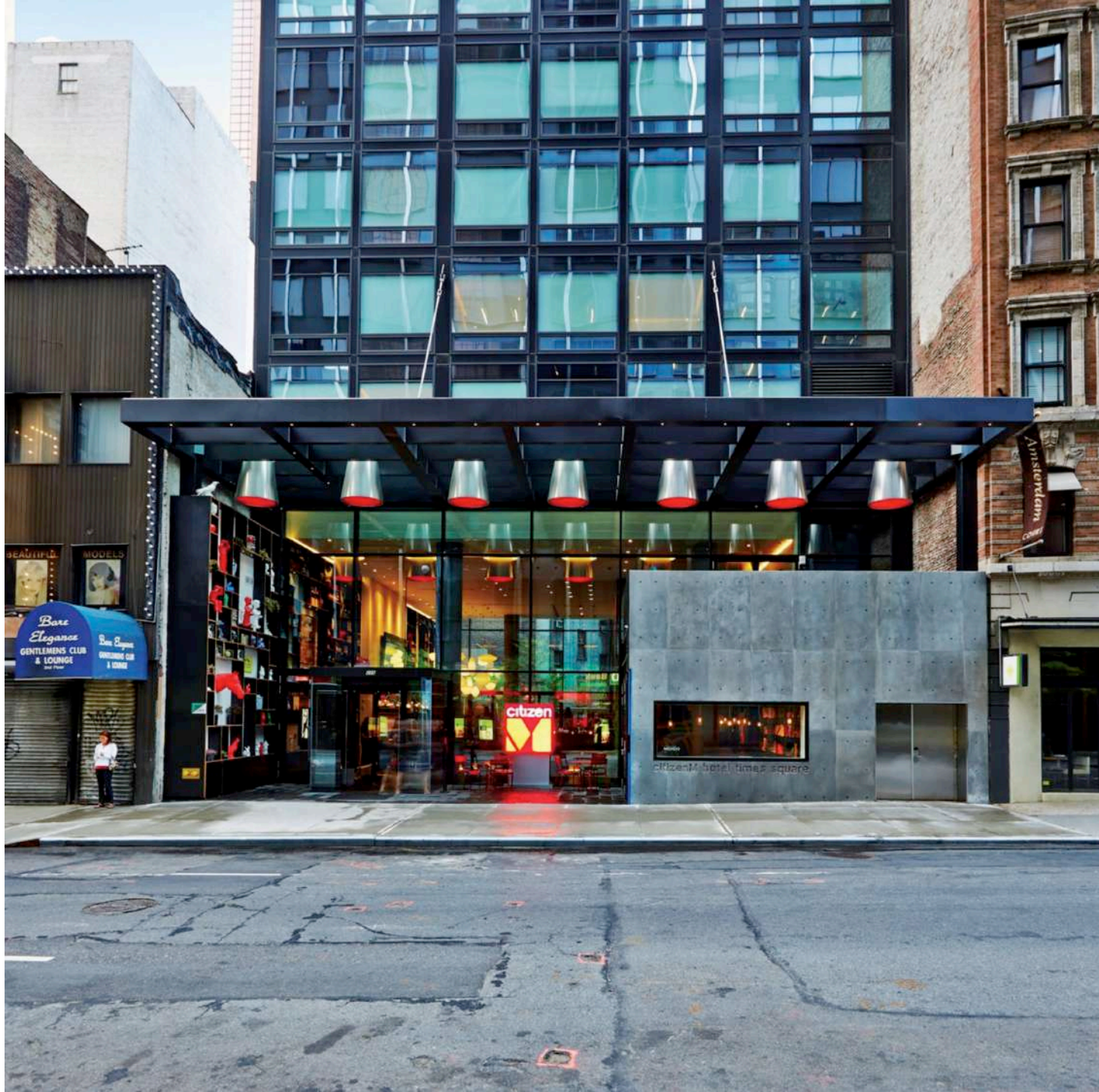
FACADE CONSULTANT:

FSA - Frank Seta & Associates

SCOPE OF WORK:

Design, Engineering and Fabrication,
of Schuco Unitized Curtain Wall
Units, Storefront Facade, Tech Floor





CitizenM

LOCATION:

218 West 50th Street, New York

ARCHITECT/DESIGNER:

Concrete

YEAR:

2014

TYPE OF BUILDING:

Hotel

DATA:

Entrance, Storefront

DEVELOPER:

CitizenM

CM/GENERAL CONTRACTOR:

Flintlock Construction Services, LLC

GLAZING CONTRACTOR:

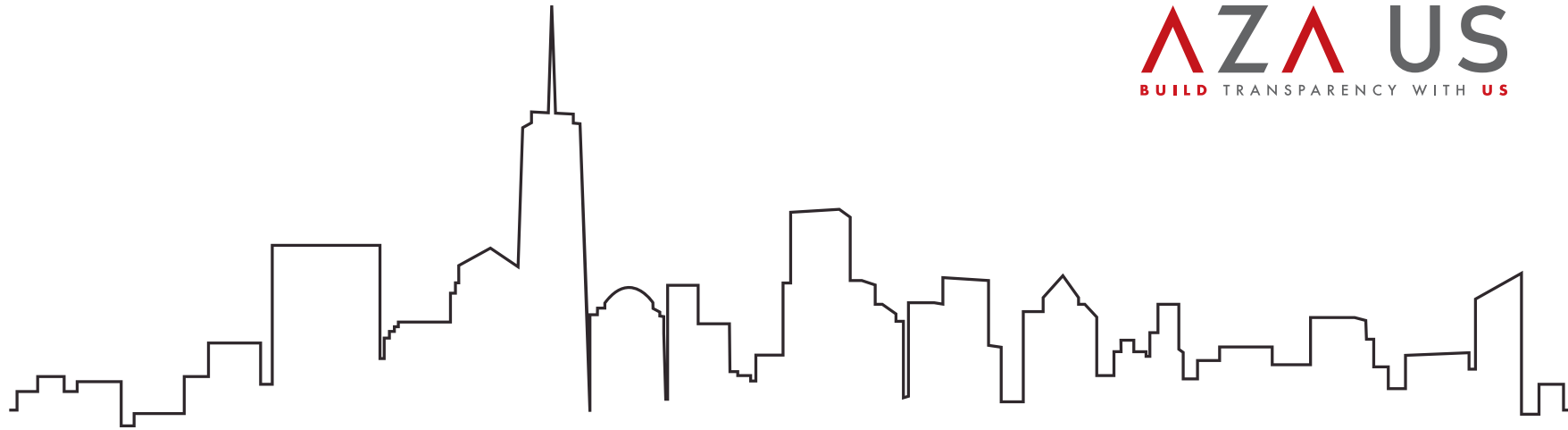
FA & Partners Inc.

SCOPE OF WORK:

Design, Engineering and Fabrication
of Schuco Storefront Facade



Build transparency with us



AZA US
BUILD TRANSPARENCY WITH US



AZA US Corporation

184E 7th Street
New York, NY 10009

T. +1 212 228 8972
F. +1 212 228 5702

info@aza.us.com
www.aza.us.com